

**KOMAC**  
Technology with Passion



# Attachments series

**Korea Machine Co., Ltd.**

#703, 33 Gukhoe-daero 76-gil,  
Yeongdeungpo-gu, Seoul, Republic of Korea. 07241

+82-2-761-0880

+82-2-761-0049

www.komac.co.kr

hq@komac.co.kr



Homepage



Youtube

www.komac.co.kr

**KOMAC**  
Technology with Passion

# VISION 2030

## KOMAC

Emerging as a global leader of hydraulic breakers and other attachments by 2030

Komac currently has constructed about 65 dealer networks all over the world and we are moving forward for Vision based on endless passion for technology and the spirit of familism.

We will serve domestic and international customers with the world's best function, quality, and service which are recognized in overseas market.

In the future, we will have a chance to take a leap trying to become an integrated heavy industry beyond the attachment industry.



# Attachments Application



Application Field	Suitable Products	Typical Work Examples
DEMOLITION	Hydraulic Breaker, Multi Crusher, (Fixed/Hydraulic) Pulverizer, Shear, Demolition, Demolition Grab, TRIS22, Mechanical Grab	<ul style="list-style-type: none"> <li>Demolition of concrete buildings and bridges</li> <li>Removal of old foundations and retaining walls</li> <li>Breaking road surfaces and asphalt pavements</li> <li>Dismantling steel structures and H-beams</li> <li>Tunnel expansion and underground excavation</li> </ul>
CONSTRUCTION	Breaker, Crusher, Pile Driver, TRIS22, Ripper, VibroRipper, (Rotating/Fixed) Tilt Bucket, Drum Cutter, Bucket Crusher	<ul style="list-style-type: none"> <li>Excavation and trenching work for utilities</li> <li>Foundation and footing removal</li> <li>Concrete slab and column breaking</li> <li>Rock crushing during site preparation</li> <li>Easy attachment change for multi-tasking on-site</li> </ul>
RECYCLING / WASTE MANAGEMENT	(Fixed/Hydraulic) Pulverizer, Crusher, Shear, Grab, Clam Shell Grab	<ul style="list-style-type: none"> <li>On-site concrete crushing for material reuse</li> <li>Sorting and cutting scrap steel</li> <li>Separating rebar from demolished concrete</li> <li>Transferring waste materials to recycling plants</li> <li>Handling bulk debris efficiently</li> </ul>
MINING & QUARRYING	Breaker, Bucket Screener, Bucket Crusher	<ul style="list-style-type: none"> <li>Primary rock breaking and ore extraction</li> <li>Size reduction of overburden and boulders</li> <li>Secondary breaking of oversized stones</li> <li>Loading and transporting mined materials</li> <li>Maintenance of quarry benches</li> </ul>
URBAN REFURBISHMENT / INTERIOR WORK	Mini Crusher, Mini Shear, Clam Shell Grab, Mechanical Grab, (Rotating/Fixed) Tilt Bucket	<ul style="list-style-type: none"> <li>Partial demolition inside buildings</li> <li>Refurbishment of old structures in limited spaces</li> <li>Low-noise, low-vibration demolition near occupied areas</li> <li>Concrete wall and beam cutting without damaging adjacent areas</li> <li>Removing internal partitions and small foundations</li> </ul>
STEEL STRUCTURE DISMANTLING	Hydraulic Shear, Mini Shear, Mechanical Grab	<ul style="list-style-type: none"> <li>Cutting beams, columns, and steel frames</li> <li>Dismantling shipyards, plants, and factory structures</li> <li>Recycling heavy metal components</li> <li>Processing rail steel and scrap piles</li> </ul>
FORESTRY / WOOD HANDLING	Wood Grab	<ul style="list-style-type: none"> <li>Loading and unloading logs</li> <li>Sorting and stacking timber</li> <li>Clearing branches and stumps</li> <li>Handling wooden debris after storms</li> <li>Transferring biomass for energy recycling</li> </ul>
STONE / HEAVY MATERIAL HANDLING	Wood Grab, Stone Grab, Scrap Grab, Mechanical Grab	<ul style="list-style-type: none"> <li>Loading and transporting stones and boulders</li> <li>Rock wall construction</li> <li>Slope protection and embankment work</li> <li>Arranging landscaping rocks</li> <li>Safe handling of irregular heavy materials</li> </ul>
SCRAP & INDUSTRIAL WASTE HANDLING	Wood Grab, Wood Grab, Stone Grab, Scrap Grab, Demolition Grab, Mechanical Grab, (Rotating/Fixed) Tilt Bucket, Bucket Crusher	<ul style="list-style-type: none"> <li>Handling industrial waste and recyclable metals</li> <li>Loading/unloading scrap iron, wire, and pipes</li> <li>Sorting mixed scrap by type</li> <li>Moving large metallic components in scrap yards</li> <li>Feeding recycling machines with processed scrap</li> </ul>
COUPLER	Quick Coupler	<ul style="list-style-type: none"> <li>MAKES ATTACHMENTS PROCESS QUICKER</li> </ul>

### KOMAC Familism



Customer like my body



Products like my parents



Supplier like my children



Staff like my brothers

### KOMAC Certificates



CE Certificate



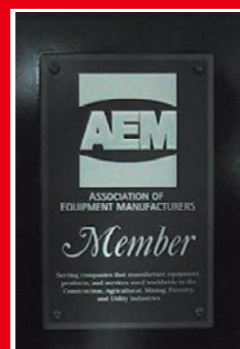
Certificate of D-U-N-S number



Homologation Certificate



ISO 9001



AEM Member

\*Use above information for reference only.

\*Products are selected based on their features and your needs.

## Multi Crusher



- A versatile attachment capable of crushing concrete, cutting steel, and separating rebar in one operation.
- Designed to maximize productivity and reduce the need for multiple tools on demolition sites.

Item / Model	Unit	TRIS22CHR - II	TRIS22PHR - II	TRIS30CHR - II	TRIS30PHR - II
<b>Selection of Machine</b>	ton	18 - 26	18 - 26	26 - 32	26 - 32
<b>Weight</b>	kgf	1,680	1,760	2,630	2,800
	lb	3,704	3,880	5,798	6,173
<b>Overall Length</b>	mm	2,128	2,024	2,418	2,631
	inch	83.78	79.8	95.2	103.58
<b>Overall Width</b>	mm	1,354	1,542	1,773	1,869
	inch	53.31	60.71	69.80	73.58
<b>Max. Opening Width</b>	mm	886	890	1,163	968
	inch	34.88	35.04	45.79	38.11
<b>Cutter Length</b>	mm	180	180	200	200
	inch	7.09	7.09	7.87	7.87
<b>Crushing Force</b>	A ton	57	51	93	91
	B ton	85	61	135	140
	C ton	-	87	-	110
	D ton	-	95	-	171
<b>Cutting Force</b>	ton	183	183	317	317
<b>Operating Pressure</b>	kgf/cm <sup>2</sup>	300	300	320	320
	psi	4,226	4,226	4,550	4,550
<b>Oil Flow Rate</b>	LPM	200 - 250	200 - 250	250 - 300	250 - 300
	GPM	52.8 - 66.1	52.8 - 66.1	66.1 - 79.2	66.1 - 79.2
<b>Speed-Up Valve</b>	N/A	Option	Option	Option	Option
<b>Motor Setting Pressure</b>	kgf/cm <sup>2</sup>	160	160	160	160
	psi	2,275	2,275	2,275	2,275
<b>Motor Oil Flow Rate</b>	LPM	36 - 40	36 - 40	36 - 40	36 - 40
	GPM	9.5 - 10.5	9.5 - 10.5	9.5 - 10.5	9.5 - 10.5
<b>Revolving Speed</b>	RPM	13 - 15	13 - 15	13 - 15	13 - 15

## Demolition



- Engineered for fast, safe, and efficient structural demolition work.
- Robust design ensures durability under severe working conditions.

Item / Model	Unit	TRIS22DHR	TRIS30DHR
<b>Selection of Machine</b>	ton	30-40	30-40
<b>Weight</b>	kgf	2,000	2,630
<b>Overall Length</b>	mm	2,321	2,529
<b>Overall Width</b>	mm	1,354	1,213
<b>Arm Width</b>	mm	645	731
<b>Max. Opening Width</b>	mm	400	500
<b>Cutter Length</b>	ton	61	82
	A ton	172	134
	B ton	256	229
	C ton	300	320
<b>Crushing Force</b>	D ton	200-250	250-300
	ton	18-26	26-32
<b>Operating Pressure</b>	kgf/cm <sup>2</sup>	Option	Option
<b>Oil Flow Rate</b>	LPM	160	160
<b>Speed-Up Valve</b>	N/A	13-15	13-15

## Mini Crusher



- Compact and lightweight crusher ideal for small demolition jobs and confined spaces.
- Offers precise crushing performance while maintaining easy handling and control.

Item / Model	Unit	TRIS1M	TRIS2M	TRIS3M	TRIS5M
<b>Selection of Machine</b>	ton	0.8 - 2	1.5 - 3	2.5 - 5	4 - 6
	lb	1,764 - 4,409	3,307 - 6,614	5,511 - 11,023	8,818 - 13,228
<b>Weight</b>	kgf	105	180	330	400
	lb	231	397	728	882
<b>Overall Length</b>	mm	890	1,110	1,305	1,410
	inch	35	44	51	56
<b>Overall Width</b>	mm	570	688	726	840
	inch	22	27	29	33
<b>Bore dia.</b>	mm	125	135	165	165
	inch	4.9	5.3	6.5	6.5
	mm	90	100	120	120
	inch	3.5	3.9	4.7	4.7
<b>Cylinder</b>	mm	175	205	220	260
	inch	6.9	8.1	8.7	10.2
	mm	410	480	490	530
	inch	16.1	18.9	19.3	20.9
<b>Min length</b>	mm	585	685	710	790
	inch	23	27	28	31.1
<b>Operating pressure</b>	kgf/cm <sup>2</sup>	210	210	210	210
	psi	2,987	2,987	2,987	2,987
<b>Force at the cutter</b>	kgf	58,100	61,900	83,600	99,400
	lb	128,087	136,464	184,304	219,136
<b>Force at the 1st jaw tip</b>	kgf	30,000	32,200	39,500	48,200
	lb	66,138	70,988	87,081	106,261
<b>Force at the end of jaw tip</b>	kgf	19,900	21,300	27,900	31,500
	lb	43,871	46,958	61,508	69,445
<b>Opening width of jaw tip</b>	mm	280	360	430	530
	inch	11	14	17	21
<b>Pin dia.</b>	mm	45	50	60	60
	inch	1.8	2.0	2.4	2.4
	mm	55	60	70	70
<b>Jaw + frame</b>	inch	2.2	2.4	2.8	2.8
	mm	30	30	45	50
<b>Jaw plate</b>	inch	1.2	1.2	1.8	2.0
	Material	N/A	HARDOX 500		
<b>Swivel joint</b>	N/A		Yes		
<b>Rotating angle</b>	deg		360 ( Free Rotating )		
<b>Synchronizing linkage</b>	N/A		Yes		
<b>Power booster</b>	N/A		No		

## Hydraulic Pulverizer



- High-performance pulverizer designed to crush reinforced concrete and separate rebar efficiently.
- Ideal for secondary demolition and recycling operations.

Item / Model	Unit	TRIS22PHR	TRIS30PHR
<b>Selection of Machine</b>	ton	18 - 26	26 - 32
<b>Weight</b>	kgf	2,000	2,600
<b>Overall Length</b>	mm	2,386	2,627
<b>Overall Width</b>	mm	1,367	1,443
<b>Max. Opening Width</b>	mm	886	957
<b>Cutter Length</b>	mm	200	300
	A ton	53	73
	B ton	72	102
	C ton	97	134
<b>Crushing Force</b>	D ton	145	201
	ton	165	229
<b>Operating Pressure</b>	kgf/cm <sup>2</sup>	300	320
<b>Oil Flow Rate</b>	LPM	200 - 250	250 - 300
<b>Speed-Up Valve</b>	N/A	Option	Option
<b>Motor Setting Pressure</b>	kgf/cm <sup>2</sup>	160	160
<b>Motor Oil Flow Rate</b>	LPM	36 - 40	36 - 40
<b>Revolving Speed</b>	RPM	13 - 15	13 - 15



## Fixed type Pulverizer



- Heavy-duty fixed pulverizer designed for primary demolition applications.
- Provides strong crushing force and stable operation.

Item / Model	Unit	TRIS22P	TRIS30P
<b>Selection of Machine</b>	ton	18 - 26	26 - 32
<b>Weight</b>	kgf	1,800	2,350
<b>Overall Length</b>	mm	1,836	1,981
<b>Overall Width</b>	mm	1,430	1,541
<b>Arm Width</b>	mm	320	380
<b>Max. Opening Width</b>	mm	850	920
<b>Cutter Length</b>	ton	200	300
	A ton	108	123
	B ton	150	171
	C ton	178	199
<b>Crushing Force</b>	D ton	220	239
	ton	270	286
<b>Operating Pressure</b>	kgf/cm <sup>2</sup>	300	320
<b>Oil Flow Rate</b>	LPM	200 - 250	250 - 300
<b>Speed-Up Valve</b>	N/A	Option	Option

## Shear



- Powerful shear optimized for cutting steel structures, beams, and scrap materials.
- Ensures clean and efficient cutting performance.

Item / Model	Unit	TRIS22SHR	TRIS30SHR	TRIS22SHR-II	TRIS30SHR-II
<b>Selection of Machine</b>	ton	18 - 26	26 - 32	18 - 26	26 - 32
<b>Weight</b>	kgf	2,000	2,450	1,760	2,800
	lb	4,409	5,401	3,880	6,173
<b>Overall Length</b>	mm	1,995	2,386	2,072	2,434
	inch	78.54	99.94	81.57	95.83
<b>Overall Width</b>	mm	1,071	1,214	1,294	1,585
	inch	42.17	47.79	50.94	62.40
<b>Max. Opening Width</b>	mm	507	580	522	603
	inch	19.96	22.83	20.55	23.74
<b>Cutter Length</b>	mm	500	600	120 x 4ea	120 x 5ea
	inch	19.69	23.62	4.72 x 4ea	4.72 x 5ea
<b>Cutting Force</b>	A ton	172	256	73	129
	B ton	172	256	94	157
	C ton	172	256	127	197
	D ton	172	256	200	259
	E ton	172	256	385	385
<b>Operating pressure</b>	kgf/cm <sup>2</sup>	300	320	300	320
	psi	4,226	4,550	4,226	4,550
<b>Oil Flow Rate</b>	LPM	200 - 250	250 - 300	200 - 250	250 - 300
	GPM	52.8 - 66.1	66.1 - 79.2	52.8 - 66.1	66.1 - 79.2
<b>Speed-Up Valve</b>	N/A	Option	Option	Option	Option
<b>Motor Setting Pressure</b>	kgf/cm <sup>2</sup>	160	160	160	160
	psi	2,275	2,275	2,275	2,275
<b>Motor Oil Flow Rate</b>	LPM	36 - 40	36 - 40	36 - 40	36 - 40
	GPM	9.5 - 10.5	9.5 - 10.5	9.5 - 10.5	9.5 - 10.5
<b>Revolving Speed</b>	RPM	13 - 15	13 - 15	13 - 15	13 - 15

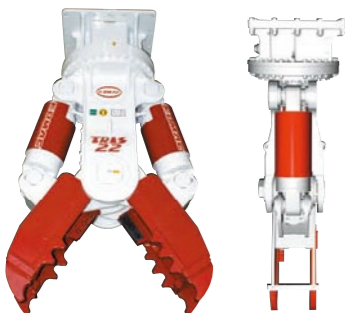
## Mini Shear



- Compact shear suitable for light demolition and metal cutting tasks.
- Ideal for use with smaller excavators in tight job sites.

Item / Model	Unit	TRIS2S	TRIS3S	TRIS5S	TRIS5SHR
<b>Selection of Machine</b>	ton	1.2 - 3.8	2 - 5.7	4 - 8	4 - 8
	US ton	1.3 - 4.2	2.2 - 6.3	4.4 - 8.8	4.4 - 8.8
<b>Weight</b>	kgf	190	260	430	500
	lb	419	573	948	1,102
<b>Overall Length</b>	mm	1,085	1,186	1,412	1,456
	inch	43	47	56	57
<b>Overall Width</b>	mm	478	576	665	665
	inch	19	23	26	26
<b>Operating pressure</b>	kgf/cm <sup>2</sup>	210	210	210	210
	psi	2,987	2,987	2,987	2,987
<b>Max Force</b>	ton	65	111	152	152
	US ton	72	122	167	167
<b>Opening width of jaw tip</b>	mm	200	231	288	288
	inch	8	9	11	11
<b>Jaw plate</b>	Thickness	mm	40	50	50
	Material	inch	1.6	1.6	2.0
		HARDOX 500			
<b>Swivel joint</b>	N/A	Yes			
<b>Rotating angle</b>	deg	360°( free rotating )		360° (Hydraulic rotating)	
<b>Power booster</b>	N/A	No			

## TRIS 22



- Dual cylinders - Equipped with dual cylinders which provide jaw exchange.
- Single main-pin - Easy and simple to detach and storage.
- Multi-use (3 Jaws for 1 body) - Multi shapes of the jaws in one body.
- Enhanced durability - Declining tool breakdown and wearing with welded tool, benefit from fine steel.
- Superior design - Single pin offers narrow grab width, enabling multi-purpose.
- Handy maintenance - Designed for convenient maintenance by detaching jaw, which allows easy to enter.
- Enhanced durability.
- Lower noise.

Item / Model	Unit	TRIS 22	
<b>Selection of Machine</b>	ton	20 - 28	
<b>Weight</b>	kgf	2,000	
	lb	4,409	
<b>Overall Length</b>	mm	2,260	
	inch	88.98	
<b>Overall Width</b>	mm	1,150	
	inch	45.28	
<b>Opening Width</b>	mm	400	
	inch	15.75	
<b>Max. jaw open Width</b>	mm	860	
	inch	33.86	
<b>Cutter Length</b>	mm	190	
	inch	7.48	
<b>Cylinder</b>	ea	2	
<b>Selection of Machine</b>	ton	290	
<b>Oil Flow</b>	l/min	200	
<b>Operate Pressure</b>	bar	320	
	psi	4,641	
<b>Oil flow</b>	l/min	38-90	
	gal/min	10.0 - 23.8	
<b>Rotation</b>	Operate Pressure	bar	70 - 175
		psi	15.4 - 38.5
	Rotation ratio	N/A	4.7 : 1
<b>Hose</b>	Main line	inch	1"ORFS#16
	rotating line	inch	1/2" BSP

## Scrap Grab



- Designed for efficient handling of scrap metal and recycling materials.
- Strong gripping force ensures safe and stable operation.
- Change bushing
- Pipe Setting Pressure :  
Close Pressure : 250kg/cm<sup>2</sup> / Open Pressure : 250kg/cm<sup>2</sup>
- Rotator Pressure : 100 - 140kg/cm<sup>2</sup>
- Motor Drain Pipe Setting :  
Setting : R.P. 140kg/cm<sup>2</sup> / Non-Setting : R.P. 100kg/cm<sup>2</sup>

Item / Model	Unit	SSB600	SSB800	SSB1000
<b>Selection of Machine</b>	ton	12 - 18	18 - 25	28 - 35
<b>Capacity</b>	liter	600	800	1,000
<b>Weight</b>	kgf	1,050	1,300	1,500
<b>Inside operate length</b>	mm	1,859	1,939	2,013
<b>Outside operate length</b>	mm	849	969	1,192
<b>Inside operate height</b>	mm	1,550	1,674	1,969
<b>Outside operate height</b>	mm	1,850	1,970	2,203



## Stone Grab



- Robust grab designed for handling stones, rocks, and construction debris.
- Ideal for quarry and construction site applications.
- Pipe Setting Pressure :  
Close Pressure : 250kg/cm<sup>2</sup> / Open Pressure : 250kg/cm<sup>2</sup>
- Rotator Pressure : 100 - 140kg/cm<sup>2</sup>
- Motor Drain Pipe Setting :  
Setting : R.P. 140kg/cm<sup>2</sup> / Non-Setting : R.P. 100kg/cm<sup>2</sup>

Item / Model	Unit	ST600	ST800	ST1000	ST1500
<b>Selection of Machine</b>	ton	12 - 18	18 - 25	28 - 35	36 - 42
<b>Capacity</b>	liter	600	800	1,000	1,500
<b>Weight</b>	kgf	1,325	1,526	1,804	2,100
<b>Inside operate length</b>	mm	1,329	1,440	1,760	2,057
<b>Outside operate length</b>	mm	121	130	140	145
<b>Operate width A</b>	mm	520	520	572	650
<b>Operate width B</b>	mm	900	900	1,004	1,100
<b>Inside operate height</b>	mm	833	1,050	1,150	1,300
<b>Outside operate height</b>	mm	777	1,041	1,189	1,320



## Wood Grab



- Specially designed for handling logs, timber, and wood waste.
- Ensures efficient and safe material handling in forestry and recycling sites.

Item / Model	Unit	SW300	SW600	SW800	SW1000	SW1500	SW2000
<b>Selection of Machine</b>	ton	5	12 - 18	18 - 25	25 - 32	32 - 42	42 - 47
<b>Capacity</b>	liter	300	600	800	1,000	1,500	2,000
<b>Weight</b>	kgf	400	850	1,000	1,300	1,600	1,950
<b>Inside operate length</b>	mm	1,196	1,709	1,750	1,880	2,250	2,600
<b>Outside operate length</b>	mm	100	280	310	340	566	705
<b>Inside operate height</b>	mm	397	741	778	1,262	1,550	1,720
<b>Outside operate height</b>	mm	675	1,157	1,244	1,370	1,846	2,010



## Demolition Grab



- Multi-purpose grab for demolition, sorting, and material handling.
- Provides excellent visibility and control during operation.
- Pipe Setting Pressure :  
Close Pressure : 250kg/cm<sup>2</sup> /Open Pressure : 250kg/cm<sup>2</sup>
- Rotator Pressure : 100 ~ 140kg/cm<sup>2</sup>
- Motor Drain Pipe Setting :  
Setting : R.P. 140kg/cm<sup>2</sup> /Non-Setting : R.P. 100kg/cm<sup>2</sup>

Item / Model	Unit	SG1500	SG2000	SG3000	SG4000
Selection of Machine	ton	12 ~ 18	18 ~ 25	28 ~ 35	36 ~ 42
Capacity	liter	600	800	1,000	1,500
Weight	kgf	1,050	1,370	1,700	2,000
Inside operate length	mm	1,751	1,923	2,082	2,120
Outside operate length	mm	814	883	982	1,060
Operate width A	mm	900	1,030	1,080	1,160
Inside operate height	mm	596	744	770	794
Outside operate height	mm	762	905	956	1,006

Above specifications are subject to change without prior notice for quality improvement.

## Clam Shell Grab



- Ideal for handling bulk materials such as sand, gravel, and soil.
- Provides smooth operation and precise material control.
- Pipe Setting Pressure :  
Close Pressure : 250kg/cm<sup>2</sup> /Open Pressure : 250kg/cm<sup>2</sup>
- Rotator Pressure : 100 ~ 140kg/cm<sup>2</sup>
- Motor Drain Pipe Setting :  
Setting : R.P. 140kg/cm<sup>2</sup> /Non-Setting : R.P. 100kg/cm<sup>2</sup>

Item / Model	Unit	SC600	SC800	SC1000	SC1500	SC2000
Selection of Machine	ton	12 ~ 18	18 ~ 25	28 ~ 35	36 ~ 42	43 ~ 47
Capacity	liter	600	800	1,000	1,500	2,000
Weight	kgf	720	980	1,200	1,500	1,810
Inside operate length	mm	2,223	2,223	2,328	2,641	2,735
Outside operate length	mm	1,752	1,752	1,856	2,151	2,247
Inside operate height	mm	1,408	1,408	1,408	1,408	1,425
Outside operate height	mm	2,200	2,200	2,253	2,404	2,450
Operate width-C	mm	600	800	900	1,200	1,500

Above specifications are subject to change without prior notice for quality improvement.



## Mechanical Grab



- Simple and durable grab operated without hydraulic lines.
- Easy installation and low maintenance cost.
- Replaceable Teeth

Item / Model	Unit	SMG10	SMG20	SMG30	SMG40	SMG50	SMG60
Selection of Machine	ton	10 ~ 15	15 ~ 20	20 ~ 25	25 ~ 30	30 ~ 40	40 ~ 50
Weight	kgf	780	1,330	1,560	1,980	2,450	2,990
Full Open(A)	mm	2,200	2,600	2,900	3,100	3,250	3,500
Full Closed(B)	mm	230	250	260	280	310	330
Height Closed(C)	mm	1,330	1,460	1,580	1,700	1,810	1,970
Width Upper Moveable Jaw	mm	640	730	730	800	840	960
Width Lower Fixed Jaw	mm	1,000	1,140	1,140	1,240	1,338	1,520

Above specifications are subject to change without prior notice for quality improvement.

## Ripper



- Heavy-duty ripper designed for breaking hard soil, frozen ground, and weathered rock.
- Delivers high penetration force with simple structure.

Item / Model	Unit	KTR100	KTR200	KTR300	KTR400	KTR600	KTR800	KTR1000	KTR1400	KTR1700
Selection of Machine	ton	1-2	3-4	4.5-5.5	7-8	9-15	15-22	24-30	32-38	40-50
Overall Height(H)	mm	462-470	620-625	687-690	773-820	1050-1070	1320	1470-1485	1600-1620	1640-1660
Overall Length(L2)	mm	380-310	340-345	496-505	311-348	750-760	920	950-960	990-1000	1000-1010
Overall Width(W2)	mm	195-218	251-300	280-290	480-520	405-410	510-517	600-615	660-680	670-685
Mounting Width(W1)	mm	90-130	125-168	165	290-343	260-275	306-340	381-411	410-430	450-475
Pins Distance(L1)	mm	80-190	185-215	230-285	165-210	380-487	425-485	473-530	520-540	550-580
Weight	Kg	23-28	32-35	95-105	130-145	235-250	433-450	590-600	740-750	800-825
Ripper TIP	-	3-4ton Tooth	4-7ton Tooth	15ton Tooth		D7N		D9N (Option, D10N)		

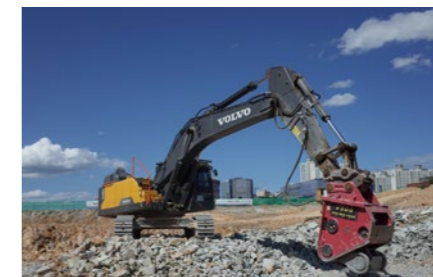
## Vibro Ripper



- Advanced ripper using vibration technology for efficient rock breaking.
- 3 to 5 times higher productivity than hydraulic breakers
- Reduces noise, vibration, and fuel consumption compared to breakers.

Item / Model	Unit	V220	V320	V450	V550
Selection of Machine	ton	20 - 28	29 - 36	37 - 46	47 - 65
Frequency	bpm	2500 - 3000	2500 - 2800	1700 - 1800	1600 - 1700
Setting Pressure	bar(psi)	250(3626)	250(3626)	280(4061)	280(4061)
Return Pressure	bar(psi)	6(87)	6(87)	6(87)	6(87)
Required Oil Flow	L/min	170 - 200	210 - 230	250 - 260	280 - 300
Tooth	Service Weight	kg	2650	3750	4780
	A x B	mm	1102 x 485	1200 x 485	1245 x 585
	L x W x H	mm	2945 x 1350 x 822	3181 x 1455 x 900	3433 x 1551 x 986
Chisel	Service Weight	kg	-	-	4880
	A x B	mm	-	-	1296 x 856
	L x W x H	mm	-	-	3484 x 1551 x 986
Tool Size	mm	-	-	Ø130 x 1200	Ø140 x 1300

Above specifications are subject to change without prior notice for performance enhancement.



## Drum Cutter



• **Direct Drive, High Torque**  
A direct-drive hydraulic piston motor delivers high torque with maximum efficiency and minimal mechanical loss.

• **Optimized Structural Design**  
Compact, symmetrical frame ensures smooth material discharge, reduced working width, and stable operation, including underwater applications up to 30 m.

• **Advanced Protection, Minimal Maintenance**  
Integrated filtration, accumulator, and safety valve protect the hydraulic system, eliminating the need for routine lubrication or complex maintenance.

• **Proven Alternative to Conventional Breaking**  
Low-vibration milling enables precise rock breaking while producing reusable crushed material, ideal where impact systems are ineffective.

Item / Model	Unit	KDC 35	KDC 135	KDC 235	KDC 335	KDC 435	KDC 535
<b>Selection of Machine</b>	ton lbs	6 - 12 13000 - 26500	9 - 16 19800 - 35200	14 - 22 30800 - 48500	20 - 34 44000 - 75000	28 - 45 61700 - 99000	50 - 75 110000 - 165400
<b>Weight without mounting bracket</b>	kg lbs	470 1050	650 1430	1100 2420	1340 2950	2380 5240	2940 6470
<b>Nominal power</b>	hp (kW)	55 (40)	68 (50)	95 (70)	122 (90)	163 (120)	250 (185)
<b>Rotation torque</b>	kNm lbf.ft	5.1 3760	7.4 5450	12.1 8920	20 14750	26.7 19700	48 35400
<b>Cutting force</b>	kN lbf	22.5 5100	30.5 6850	40.2 9000	61 13700	71 16000	128 28700
<b>Maximum pressure</b>	BAR psi	350 5100	350 5100	400 5800	400 5800	400 5800	400 5800
<b>Required oil flow</b>	l/m gpm	65 - 120 17 - 32	90 - 150 24 - 40	140 - 190 37 - 50	170 - 250 45 - 66	240 - 340 63 - 90	350 - 500 92 - 132
<b>360° Hydraulic rotation optional</b>		yes	yes	yes	yes	yes	-
<b>Drum width (HP) standard</b>	mm inch	625 25	700 28	800 32	865 34	965 38	1270 50
<b>Drum width (GP) optional</b>	mm inch	-	-	890 36	1000 40	1100 43	1350 53
<b>Drum width (WP) optional</b>	mm inch	750 30	850 34	920 36	1200 47	-	-
<b>Drum diameter HP</b>	mm inch	500 20	520 20.5	595 23.5	660 26	750 30	750 30
<b>Height without mounting bracket</b>	mm inch	970 38	1005 40	1270 50	1335 53	1570 62	1825 72
<b>Drum distance</b>	mm inch	130 5	135 5.3	180 7	190 7.5	250 10	330 13
<b>Tooth holder diameter</b>	mm inch	22 0.9	22 0.9	38/30 1.5/1.2	38/30 1.5/1.2	38/30 1.5/1.2	38/30 1.5/1.2

## Chain Drum Cutter



• Specialized cutter designed for continuous cutting in rock and hard ground.  
• Suitable for tunneling and mining applications.

Item / Model	Unit	KCC30	KCC110	KCC150	KCC200
<b>Selection of Machine</b>	tons	2-6	15-25	25-35	35-40
<b>Maximum input power</b>	KW	22	82	110	150
<b>Maximum Flow</b>	l/min	80	260	300	450
<b>Recommended Flow</b>	l/min	40	190	210 - 260	280 - 320
<b>Working Maximum pressure</b>	bar	250	400	400	400
<b>Output Shaft Torque</b>	-	1582N·m @250 Bar	12700 N·m @320 Bar	22400 N·m @380 Bar	30288 N·m @380 Bar
<b>Pick Force</b>	-	12.16kN @250 Bar	54kN @320 Bar	56kN @380 Bar	75.7kN @380 Bar
<b>Output Shaft Speed</b>	-	100r/min @401/min	75r/min @1901/min	65r/min	52r/min
<b>Unit Weight</b>	Kg	102	850	2400-2600	3200
<b>Number of picks on cutter drum</b>	pcs	42	46	28 / 40 / 48	44
<b>Number of picks on cutter chain</b>	pcs	25	63	54	54

## Tilt Bucket



• **Powerful oil cylinder**  
With two powerful oil cylinders, the tilting bucket can easily tilt right and left by 45 degrees.  
• **Double cutting edges**  
Double cutting edges, reducing the wear to the bottom of the bucket.

• Allows tilting movement for precise grading and slope finishing.  
• Improves productivity by reducing repositioning of the excavator.

### KOMAC ROTARY TILT BUCKET

Item / Model	Unit	KMTR30	KMTR50	KMTR80	KMTR150
<b>Selection of Machine</b>	tons	2 - 4	4 - 6	8 - 10	12 - 15
<b>Motor Pressure</b>	Mpa	10 - 12	10 - 12	10 - 12	10 - 12
<b>Motor Flow</b>	L/min	20	20	25	25
<b>Cylinder Pressure</b>	Mpa	18	20	22	22
<b>Cylinder Flo</b>	L/min	20	25	25	25
<b>Weight</b>	kg	265	350	415	590

### KOMAC FIXED TILT BUCKET

Item / Model	Unit	KTB50	KTB80	KTB120	KTB200	KTB300
<b>Pin Diameter</b>	mm	ø45	ø50	ø60 / ø65	ø80	ø90 / ø100
<b>Ears Distance</b>	mm	170	220	260	340	290
<b>Pin to Pin</b>	mm	245	310	360	465	530
<b>Dimensions</b>	mm	1200*788*916	1400*869*1008	1700*1074*1210	1900*1195*1478	2030*1362*1729
<b>Selection of Machine</b>	tons	5	6 - 8	12 - 18	20 - 24	25 - 36

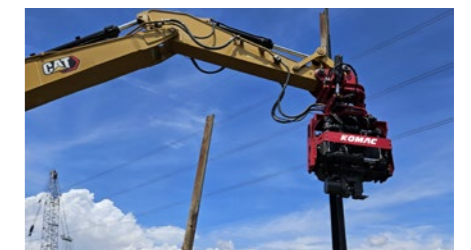
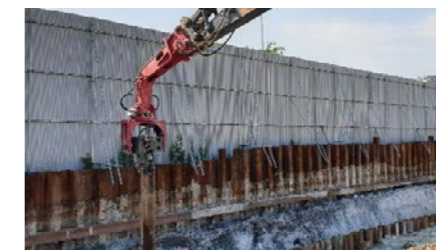
Above specifications are subject to change without prior notice for quality improvement.

## Pile Driver



• Powerful attachment designed for driving piles into various ground conditions.  
• Ensures high efficiency and consistent driving performance.

Item/Model	Unit	W250 / F250	W300 / F300	W400 / F400	F550
<b>Selection of Machine</b>	ton	18 - 26	27 - 36	37 - 46	47 - 55
<b>Frequency</b>	bpm	3400 - 3800	3000 - 3200	2800 - 3000	2600 - 2800
<b>Centrifugal Force</b>	kN(ton)	360(36)	580(58)	690(69)	800(80)
<b>Setting Pressure</b>	bar(psi)	250(3626)	250(3626)	280(4061)	280(4061)
<b>Required Oil Flow</b>	l/min	170 - 200	210 - 230	250 - 260	280 - 300
<b>Slewing / Tilting</b>	degree	360 / 90	360 / 90	360 / 90	360 / 90
<b>A</b>	mm	57	57	57	53
<b>Service Weight</b>	kg	1550	1700	1800	-
<b>W L x W x H</b>	mm	1838 x 1044 x 755	1921 x 1106 x 796	1923 x 1190 x 841	-
<b>Service Weight</b>	kg	1850	2190	2385	2725
<b>F L x W x H</b>	mm	2057 x 1353 x 740	2252 x 1319 x 822	2259 x 1403 x 875	2398 x 1489 x 921
<b>Extension Boom Weight</b>	kg	645	730	925	960



## Bucket Crusher



- Crusher bucket capable of crushing concrete and demolition waste on site.
- Reduces transportation and disposal costs significantly.

### Specification Bucket Crusher

Item / Model	Unit	KBC 13	KBC 20	KBC 25	KBC 36
Selection of Machine	ton	9 - 16	16 - 22	22 - 30	30 - 45
Load Capacity	m <sup>3</sup>	0.5	0.6	0.8	1
Operating Pressure	Mpa	24.5	24.5	24.5	24.5
Required Oil Flow	l	150	150	180	220
Bucket Loading Opening	mm	600×450	700×500	1050×550	1250×550
Operating Weight	kg	1700	2600	3650	4950
Crusher Output Adjustment	standard, mm	20 - 120	20 - 120	20 - 120	20 - 120
Crusher Output Adjustment	extended, mm	20 - 150	20 - 150	20 - 150	20 - 150



### Production rate

Material of Input	Unit	CRUSHING OUTPUT ADJUSTMENT									
		mm	20	30	40	50	60	70	80	90	100
Raw stones (≤250mm)	m <sup>3</sup> /h	8	12	16	22	27	32	37	42	48	53
Concrete (≤300mm)	m <sup>3</sup> /h	12	16	21	27	33	39	46	52	58	65
Mineral/coal (≤400mm)	m <sup>3</sup> /h	20	23.5	28	34	39	45	52	58	65	72

Material of Input	Unit	CRUSHING OUTPUT ADJUSTMENT									
		Unit	20	30	40	50	60	70	80	90	100
Raw stones (≤300mm)	m <sup>3</sup> /h	10	17.5	24	30	36	40	45	50	56	63
Concrete (≤450mm)	m <sup>3</sup> /h	20	22.5	28.5	35	45	52	60	67	74	83
Mineral/coal (≤600mm)	m <sup>3</sup> /h	35	38.5	42	46	51	57	63	69	75	82

## Bucket Screener



- Screening bucket designed to separate soil, sand, and aggregates efficiently.
- Ideal for recycling and material processing applications.

Item / Model	Unit	KEX 14~18 Ton	KEX 20 Ton	KEX 30 Ton	KEX 40 Ton	KEX 50 Ton
Selection of Machine	ton	14-18	20-29	30-39	40-49	50-
Weight	kg	1,800	2,200	28,000	3,500	4,200
Width, Length, Height	mm	1,100x1,700x1,150	1,300x2,300x1,350	1,480x2,720x1,600	1,600x3,200x1,850	1,750x3,500x2,000
Circular netSize	∅	900x1,100	1,100x1,330	1,300x1,480	1,500x1,550	1,650x1,600
RPM/ min	-	min/20-max30	min/20-max30	min/20-max30	min/20-max30	min/20-max30
Note		Without link and tooth				



## Quick Coupler



### • FULL AUTOMATIC SAFETY SYSTEM

- A revolutionary technology of battery-powered switching system controls the switch, release or lock, at the safety pin from excavator power line not by its hydraulic line ( patented ).
- When electric power disconnected, it automatically switches to manual operation.

### • ALL IN ONE

- One Body Design** : No welding between Middle and Bottom Plate provides evenly distributed stress points, increasing durability 10 times more than the couplers with welded parts.
- Versatility** : Offering the most versatility ever, it enables you to use one coupler for multiple brands of attachment within the same excavator weight class.

- Allows quick and safe attachment changes without leaving the cabin.
- Improves productivity and operator safety.

Item / Model	Unit	KMC 10	KMC 20	KMC 30	KMC 40	KMC 60	KMC 80	KMC 100	KMC 140	KMC 170	KMC 200
Selection of Machine	ton	1.0 - 2.0	2.0 - 4.5	4.5 - 6.0	6.5 - 7.5	9.0 - 15	15 - 22	23 - 30	32 - 38	40 - 50	55 -
Overall Length	mm	300 - 350	350 - 470	470 - 525	639 - 650	725 - 765	840 - 898	958 - 1080	1080 - 1150	1130 - 1220	1325 - 1345
Overall height	mm	210-235	235-265	290-320	317-330	388-400	465-480	510-588	620-650	640-670	725-745
Overall Width	mm	185-220	185-220	260-303	299-310	390-445	490-520	540-600	680-720	700-760	740-820
Pin Diameter (D)	mm(∅)	25-30	35-40	40-50	50-52	50-65	70-80	80-90	90-110	100-120	100-120
Weight	kg	25-40	40-55	55-70	90-120	150-190	270-320	350-470	560-700	780-900	880-950
Working Pressure	kg/cm <sup>2</sup>	30-200	30-200	30-220	30-220	70-120	80-320	100-350	100-350	120-420	120-420

## Compactor



- Designed for effective soil and trench compaction in construction sites.
- Ensures uniform compaction and long-term ground stability.
- maximize the use of backhoe & excavators while substantially increasing your production over other methods.

Item / Model	Unit	KMC2	KMC5	KMC8	KMC12	KMC20
Selection of Machine	ton	2 - 3	4 - 6	10 - 16	17 - 25	28 - 33
Vibration	ton	3	4	10	15	15
Max Vibration velocity	tpm	2000	2000	2000	2000	2000
Weight	kg	110	270	500	900	950
Vibration Floor Size	(L*W)mm	650*470	740*550	820*700	1100*900	1100*900
Overall Length	mm	600	760	920	1060	1100
Overall Width	mm	410	550	700	900	900
Recommended Oil Flow	l/min	25 - 40	45 - 75	85 - 105	120 - 170	120 - 170
Allowable Max. System Pressure	kg/cm <sup>2</sup>	100 - 130	100 - 130	100 - 130	150 - 200	150 - 200



# Our Challenge will keep going on with Heart & Passion

Best Function and Quality from our various line up of products.  
Best Service from our well-trained employees.

**KOMATSU**  
Technology with Passion