

ESG Heavy Equipments Recycling program

RECYCLING EXCAVATORS



Refurbished

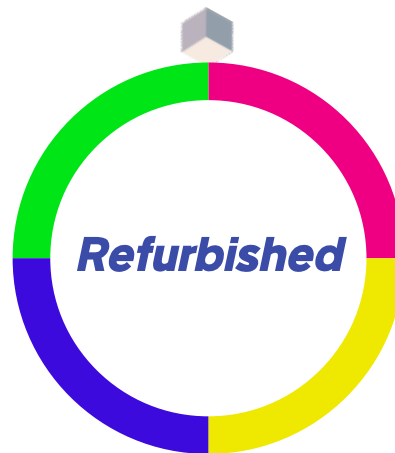
Remanufactured

Rebuilt

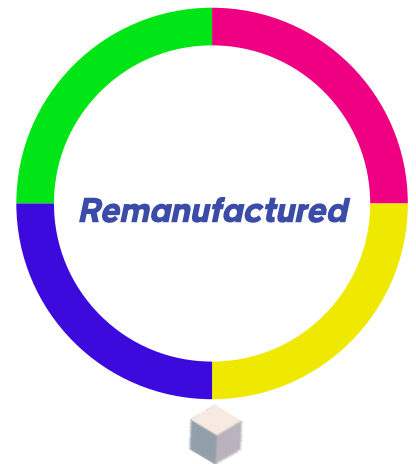
De-tiered

RECYCLING EXCAVATOR ECO-SYSTEM

Hyundai, Develon, Volvo, Cat,
Komatsu, Hitachi, Kobelco etc
(3 months warranty)



Hyundai
(1 years warranty)



Hyundai
(2 year warranty)



Hyundai, Develon
(3 months warranty)

REFURBISHED EXCAVATOR



What is "Refurbished Excavator" Work?

- Creates new concept of recycling Heavy Equipments for environmental purpose which must be ultimate solution of natural resource utilizing on earth.
- Fulfills ESG management for customers, as a specific global provider.
- Writes a meaningful revolution on Refurbished, Rebuilt and Remanufactured machine industry in the global market.

Benefit of Refurbished Excavator

- It can operate a wide range of brands such as **HYUNDAI, DEVELON, VOLVO, CAT, KOMATSU, HITACHI, KOBELCO** etc with 3 months warranty.
- Provides not only Heavy Equipments but also fresh environments.

Recycling Excavators

KOMAC
Technology with Passion

DE-TIERED MACHINE



*Photo may include optional equipment

HX-300L

Net Power
SAE J1349 / 230 HP
(171kW) at 1.950rpm

Bucket Range
0.52-1.85m³
(0.68-2.42yd³)

Standard Bucket
1.27m³ (1.66yd³)

Operating Weight
31.650kg/69.780lb



Precision Unleashed, Progress Ensured

When exporting construction machinery operating in countries with strict emission regulations, engine trouble may occur if fuel that does not meet the machine specifications is used. In order to prevent such troubles at KOMAC when distributing to areas where there are no emission regulations. We recommend "De-Tier".

What is "De-Tier" Work ?

- Remove the muffler filter and EGR system
- As the model will be changed, a new serial plate will be issued
- A "D Edition" sticker will be attached as proof of the De-Tier

Benefit of De-Tier

- You can prevent engine trouble and reduce high maintenance costs
- It can operate a wide range of countries regardless of the fuel conditions
- For developed countries with strict emission regulation, there are more options for exporting used equipment

REBUILT EXCAVATOR



Re-Built Feature

- New Engine (Tier-2) / "0" Working Hours
- New Track Links and Shoes / Well conditioned Upper and Under Rollers / Idlers / Sprocket
- Reconditioned Pumps
- Operation Seat and Inside Cabin Area
- Fully inspected and Reconditioned Swing Motor / Travel Motors / Reduction Gears / Cylinders
- Full Repainting
- Attached Rebuilt by KOMAC Plate including Rebuilt Year and Engine Manufacture Year



Engine Tier-2
(Brand new Mechanical Engine)



Reconditioning MCU / PUMPS / MOTORS



Operation Seat and Inside Cabin Area.



98% of Hydraulic Hoses



Radiator Area



Track & Bucket



Full Re-Painting



Delivery

HYUNDAI ROBEX 140W

KOMAC
Technology with Passion

Feature

- A/C
- Bucket Size : 0.58m³ Standard Bucket
- Equipped Breaker Line
- Provide 1 set of filters as free of charge
- Dimension : I (7,350mm) X L (2,495mm) X J (3,600mm) / **14 ton**



HYUNDAI ROBEX 300LC

Feature

- A/C
- Arm Length : 3,050mm / Boom Length : 6,250mm / Track Width : 600mm
- Bucket Size : 1.5m³ Standard Bucket
- Equipped Breaker Line
- Provide 1 set of filters as free of charge
- Dimension : I (11,000mm) X L (3,200mm) X J (3,600mm) / **30 ton**

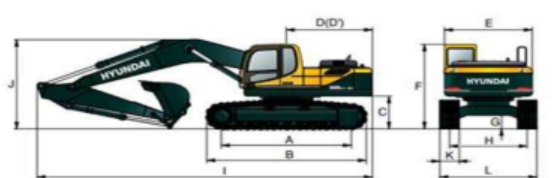


HMR

- Less than 100 hours

Warranty

- 1 Year or 1,000 Working Hours for Rebuilt Parts whichever comes first after delivery date

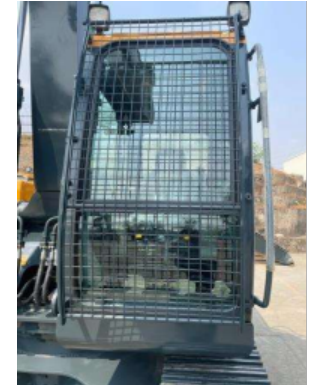
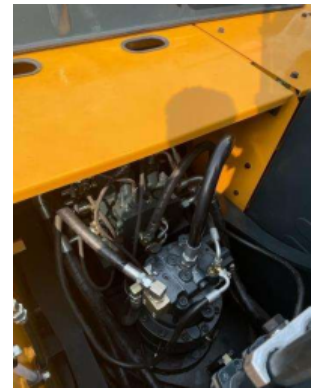


REMANUFACTURED EXCAVATOR



Remanufactured Feature

- Manufactured in a factory and manufactured in the same way as a new product in the production facility
- Used equipment is completely disassembled, completely repaired, replaced with new parts and reassembled
- Painting and performance tests are applied to the same level as the new product



FULL CHANGE

HYUNDAI R215L XL

Feature

- Dimension : I (9,570mm) X L (2,990mm) X J (3,110mm) / 22 ton

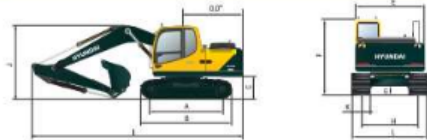


Operating Weight

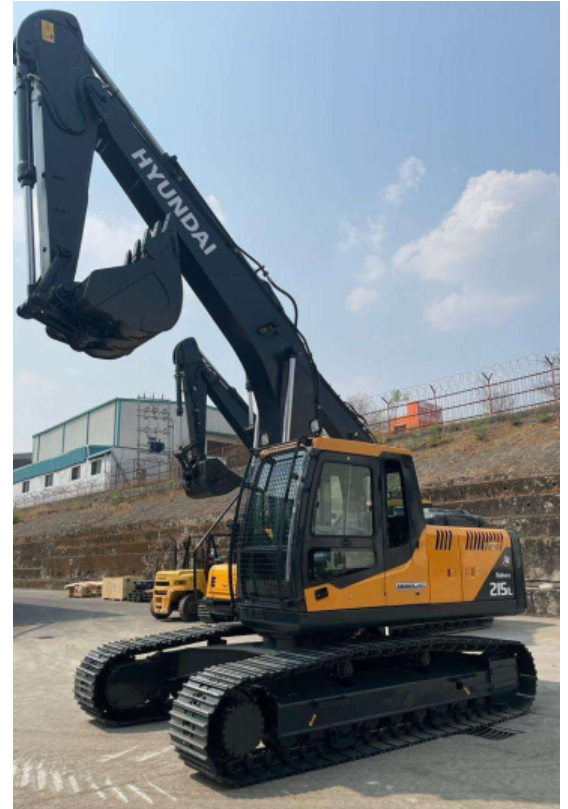
Shoe Width mm (in)	Operating weight kg (lb)	Ground pressure kgf/cm2 (psi)
600 mm (24")	22,200 (18,943)	0.47 (6.68)

Dimensions

(mm)



A	Tumbler distance	3640
B	Overall distance of crawler	4440
C	Ground clearance of counter weight	1060
D	Tail swing radius	2830
D'	Rear-end length	2770
E	Overall width of upper structure	2700
F	Overall height of cabin	2920
G	Min. ground clearance	480
H	Track gauge	2390
I	Overall length	9570
J	Overall height of boom	3110
K	Track shoe width	600
L	Overall width	2990

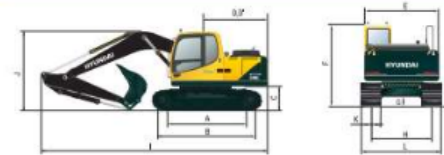


Operating Weight

Shoe Width mm (in)	Operating weight kg (lb)	Ground pressure kgf/cm2 (psi)
600 mm (24")	33,800 (74,516)	0.65 (9.24)

Dimensions

(mm)



A	Tumbler distance	4030
B	Overall length of crawler	4940
C	Ground clearance of counter weight	1200
D	Tail swing radius	3460
D'	Rear-end length	3400
E	Overall width of upper structure	2980
F	Overall height of cab	3090
G	Min. ground clearance	500
H	Track gauge	2680
I	Overall length	2.2 m ARM: 11310 2.65 m ARM: 11200
J	Overall height of boom	3420
K	Track shoe width	600
L	Overall width	3280

HYUNDAI R340L XL

Feature

- Dimension : I (11,310mm) X L (3,280mm) X J (3,420mm) / 34 ton -



HMR

- Less than 100 hours

Warranty

- 1 Year or 1,000 Working Hours for Rebuilt Parts whichever comes first after delivery date