

PILE HAMMER(DRIVER)



KOMATSU

Technology with Passion

FEATURES



1. Motor

Piston Motor with High Efficiency



2. Vibration-Proof Rubber

Improve Durability with
vibro-isolating rubber



3. Bearing

Customized design completely
resistible under high vibration force



4. Jaw

Tight clamping and easy moving

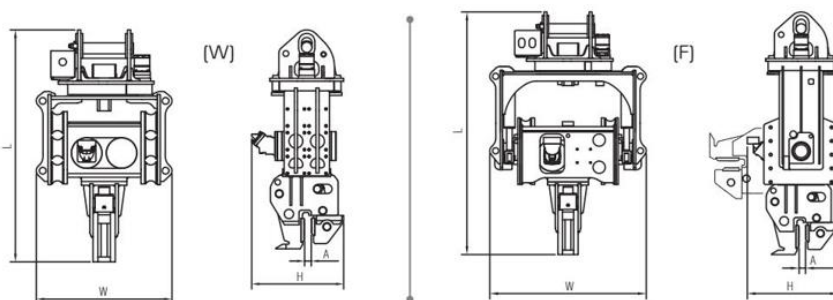


SPECIFICATIONS

SPECIFICATIONS		UNIT	KPD250	KPD300	KPD400
Carrier Weight Range		ton	18-26	25-35	34-45
Frequency		bpm	3800	3200	3100
Eccentric Moment		kgm	3.6	6.2	7.6
Centrifugal Force		kN(ton)	580(58)	700(70)	820(82)
Setting Pressure		bar(psi)	250(3625)	250(3625)	280(4061)
Required Oil Flow		L/min	180	210	260
Slewing / Tilting		degree	360 / 90	360 / 90	360 / 90
A		mm	57	57	57
W	Service Weight	kg	1550	1700	1800
	L x W x H	mm	1838 x 1044 x 755	1921 x 1106 x 796	1923 x 1190 x 841
F	Service Weight	kg	1859	2189	2384
	L x W x H	mm	2057 x 1353 x 749	2182 x 1409 x 793	2189 x 1493 x 875
Extension Boom Weight		kg	645	730	925

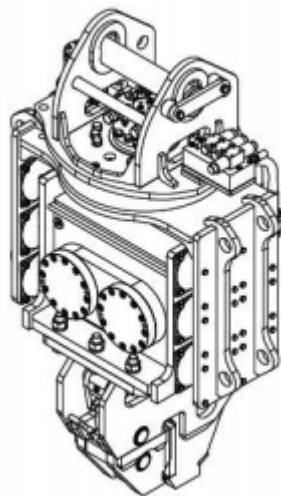
W : Normal Type

F : Tilting Type(90degree tilting Function)

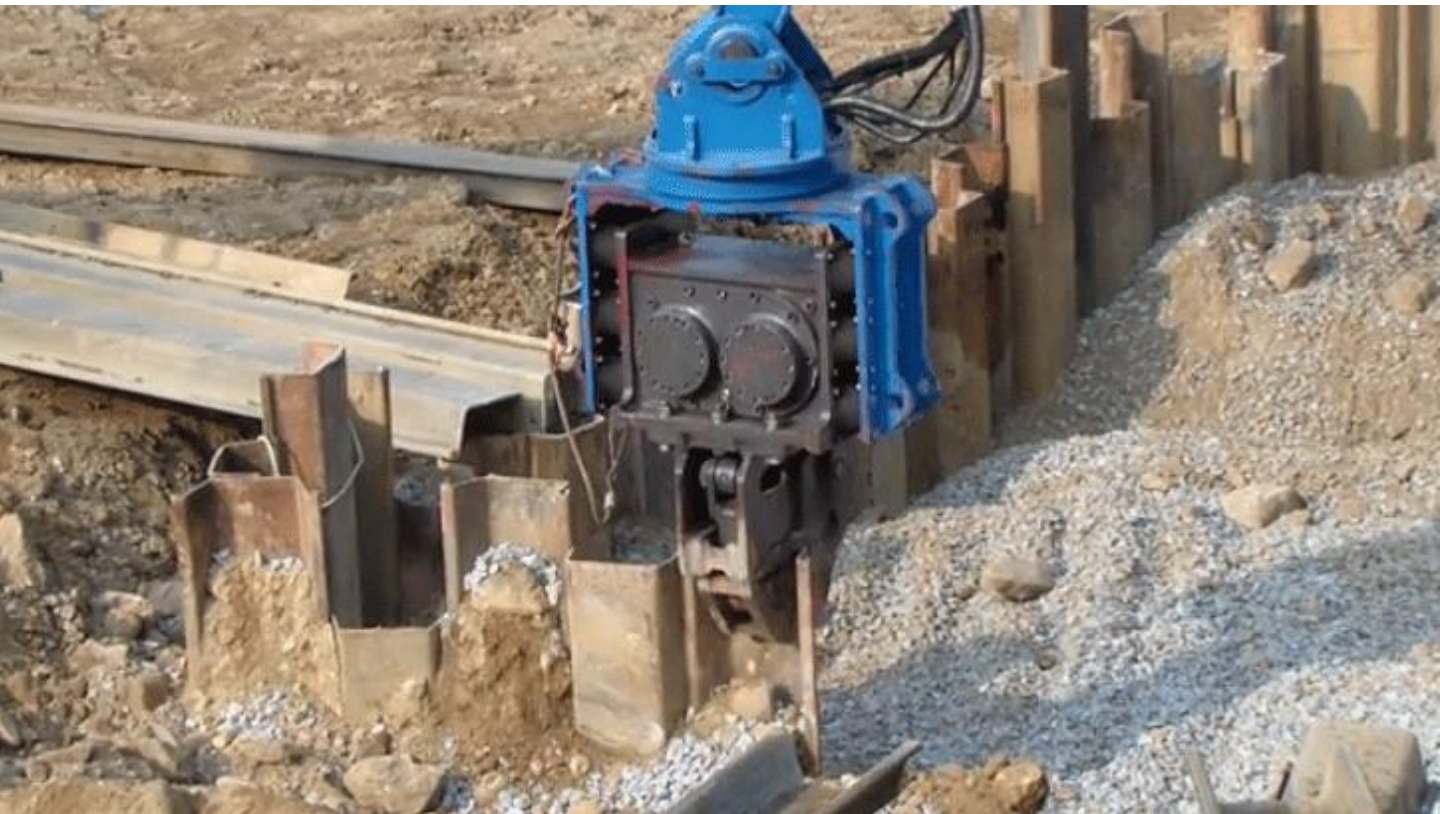


Above specifications are subject to change without any prior notice for performance enhancement.

TECHNICAL FEATURES



- 1 WIDE RANGE OF CONTRUCTION AREAS
- 2 ROTATING MOUNTING BRAKET
- 3 QUICK HYDRAULIC INSTALLATION
- 4 INTUITIVE DESIGN
- 5 OPTIONAL EXTENSION BOOM



KOMAC

#203 Yeong-Chang Building, 15 Yeouidaebang-ro 68-Gil,
Yeongdeungpo-Gu, Seoul, 07343
Tel: +82-2-761-0880 Fax : +82-2-761-0049
E-mail : sales1@komac.co.kr
www.komac.co.kr