



KOMAC REBUILT EXCAVATOR

Peace of mind, assured with KOMAC

*Re-Built Feature

- (1) New Engine (Tier-2) / "0" Working Hours
- (2) New Track Links and Shoes /Well conditioned Upper and Under Rollers / Idlers /Sprocket.
- (3) Reconditioned Pumps .
- (4) Operation Seat and Inside Cabin Area.
- (5) Fully inspected and Reconditioned Swing Motor / Travel Motors / Reduction Gears / Cylinders.
- (6) Full Repainting.
- (7) Attached Rebuilt By KOMAC Plate including Rebuilt Year and Engine Manufacture Year



Engine Tier-2
(Brand new Mechanical Engine)



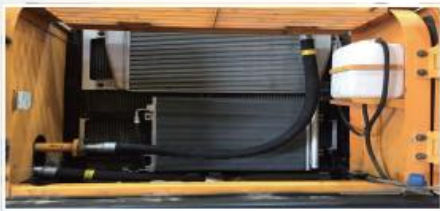
Reconditioning MCU / PUMPS / MOTORS



Operation Seat and Inside Cabin Area.



98% of Hydraulic Hoses



Radiator Area



Track & Bucket



Full Re-Painting



Delivery

HYUNDAI ROBEX 140W

Feature

- A/C
- Bucket Size : 0.58 m3 Standard Bucket
- Equipped Breaker Line
- Provide 1 set of filters as free of charge
- Dimension : I (7,350mm) X L (2,495mm) X J (3,600mm) / **14 Ton**



HYUNDAI ROBEX 300LC

Feature

- Arm Length : 3,050mm / Boom Length : 6,250mm / Track Width : 600mm - A/C -
- Bucket Size : 1.5 m3 Standard Bucket -
- Equipped Breaker Line -
- Provide 1 set of filters as free of charge -
- Dimension : I (11,000mm) X L(3,200mm) X J (3,600mm) / **30 Ton** -

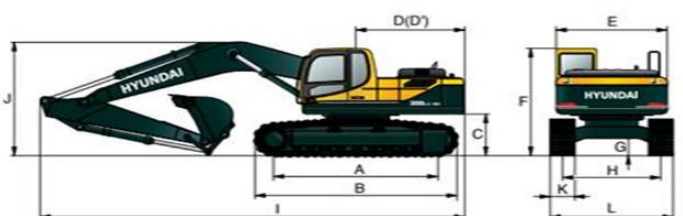


HMR

- less than 100 hours

Warranty

1 Year or 1,000 Working Hours For Rebuilt Parts whichever comes first after delivery date



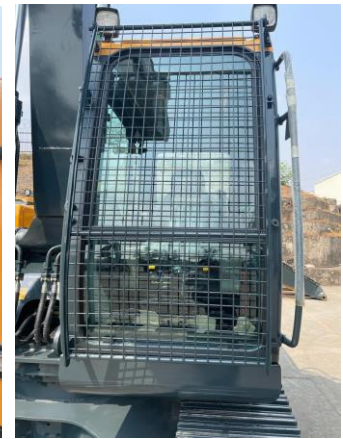
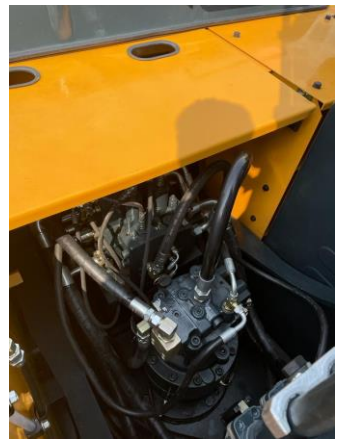


KOMAC REMANUFACTURING EXCAVATOR

Peace of mind, assured with KOMAC

*Remanufacturing Feature

Manufactured in a factory and manufactured in the same way as a new product in the production facility,
and the used equipment is completely disassembled, completely repaired, replaced with new parts,
and reassembled, and painting and performance tests are applied to the same level as the new product.



FULL CHANGE

HYUNDAI R215L XL

Feature

- Dimension : I (9,570mm) X L(2,990mm) X J(3,110mm) / 22 Ton



Operating Weight		
Shoe Width mm (in)	Operating weight kg (lb)	Ground pressure kgf/cm2 (psi)
600 mm (24")	22,200 (18,943)	0.47 (6.68)

Dimensions		(mm)
A	Tumbler distance	3640
B	Overall distance of crawler	4440
C	Ground clearance of counter weight	1060
D	Tail swing radius	2830
D'	Rear-end length	2770
E	Overall width of upper structure	2700
F	Overall height of cabin	2920
G	Min. ground clearance	480
H	Track gauge	2390
I	Overall length	9570
J	Overall height of boom	3110
K	Track shoe width	600
L	Overall width	2990


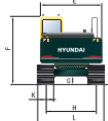


HYUNDAI R340L XL

Feature

- Dimension : I (11,310mm) X L(3,280mm) X J(3,420mm) / 34 Ton -

Operating Weight		
Shoe Width mm (in)	Operating weight kg (lb)	Ground pressure kgf/cm2 (psi)
600 mm (24")	33,800 (74,516)	0.65 (9.24)

Dimensions		(mm)
		
A	Tumbler distance	4030
B	Overall length of crawler	4940
C	Ground clearance of counter weight	1200
D	Tail swing radius	3460
D'	Rear-end length	3400
E	Overall width of upper structure	2980
F	Overall height of cab	3090
G	Min. ground clearance	500
H	Track gauge	2680
I	Overall length	2.2 m ARM 2.65 m ARM
J	Overall height of boom	3420
K	Track shoe width	600
L	Overall width	3280



HMR
- less than 100 hours

Warranty
1 Year or 1,000 Working Hours For Rebuilt Parts whichever comes first after delivery date

