



REMANUFACTURING EXCAVATOR BUSINESS PROPOSAL

Index

- 1. Why We Should Choose Remanufacturing Excavator?***
- 2. Remanufacturing Process (Reman Area)***
- 3. Comparison Table (KOMAC VS EXSITING COMPANY)***
- 4. Dimension & Feature***
- 5. More Info. And Contact***

1. Why We should choose Remanufacturing Excavator?

▶ For Customers

- Customers Who Need Used Excavator With Perfect Working Condition.
- Customers Who Need New Excavator But Don't Have Enough Budget.
- Customers Who Always Follow Cost-Effective Measures.
- Customers Who Want Brand New Mechanical Engine Excavator With "0" Working Hours.

▶ For Equipment Sellers and Rental(Hiring) Business Owners.

- Get Away From Fierce and Frustrating Used Equipment Price Competition.
- Expand Their Business Sector.
- Don't Worry About Equipment's Working Condition.
- Chance To Provide More Choices To Customers.
- Stable equipment supply

2. KOMAC Remanufacturing Process (Rebuilt Area)

**Model : ROBEX300LC / YEAR : 2009~2013*



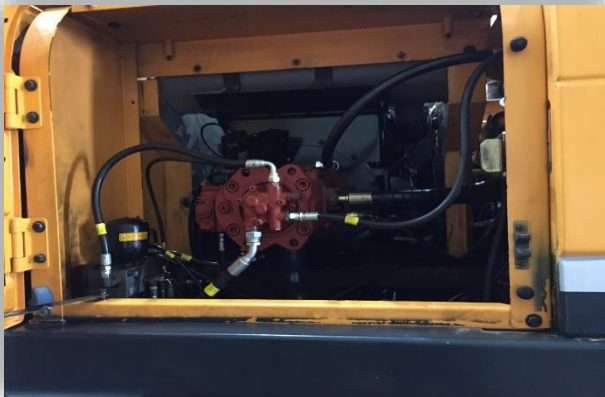
Factory for Rebuilding



Engine Tier-2
(Brand new Mechanical Engine)



Radiator Area



MCU / Pumps / Motors



2. KOMAC Remanufacturing Process (Reman Area)

**Model : ROBEX300LC / YEAR : 2009~2013*



Cabin Area



95% of Hydraulic Hoses



Finished



Track & Bucket



Full Re-Painting

2. KOMAC Remanufacturing Process (Reman Area)

**Model : ROBEX300LC / YEAR : 2009~2013*



3. Comparison Table (KOMAC VS EXSITING COMPANY)

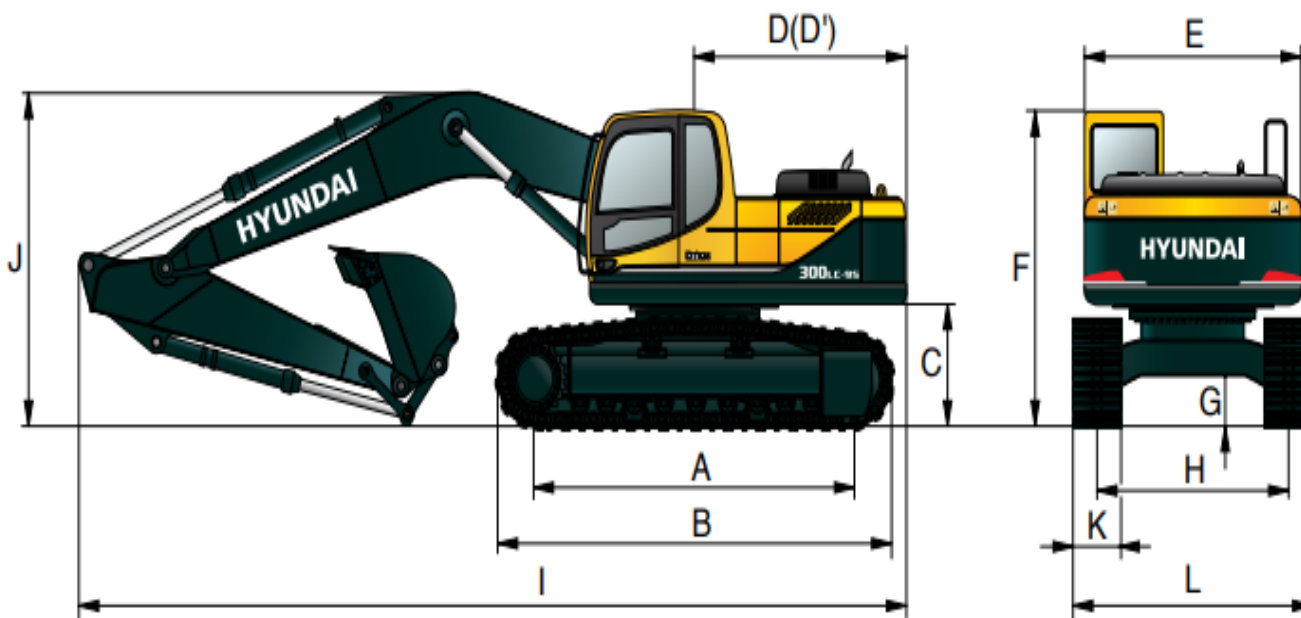
* Standard : 30 ton Excavator

Area	KOMAC	COMPETITOR
Engine	Brand New Tier-2 (Mechanical Engine)	Engine Overhaul
Working Hrs	"0"	As it is working
Painting	99% Full Repainting	90% Full Painting
Track	New Track (Korean)	New Track(Chinese)
Bucket	New Bucket (Korean)	New Bucket (Chinese)
Hyd.Hose	Charging up to 95% Hose	Charging up to 80% Hose
MCU	NEW MCU	Existing MCU
Pump	Fully Reconditioned	Fully Reconditioned
Cabin	Operation Sheet / Lever / Accessory	Operation Sheet / Accessory
Warranty	6 Months For Dealer	No
Service Parts	1 Set of All Filters And Parts Book	No

" In terms of completeness , Competitors cannot match KOMAC "

4. Dimension /Reman Area /Feature

**Dimension*



I(11,000mm) X L(3,200mm) X J (3,600mm) / Weight :29.8 TON

** Remanufacturing Area*

- (1)New Engine (Tier-2)_MODEL: HM8.3 (Made By Cummins)
New Radiator / "0" Working Hours*
- (2)New Track Links and Shoes / Well conditioned Upper and
Under Rollers / Idlers / Sprockets*
- (3) Reconditioned Pumps*
- (4) Reconditioned Operation Sheet and Inside Cabin Area*
- (5) Fully inspected and Reconditioned Swing Motor / Travel
Motors / Reduction Gears / Cylinders*
- (6) Full Repainting*

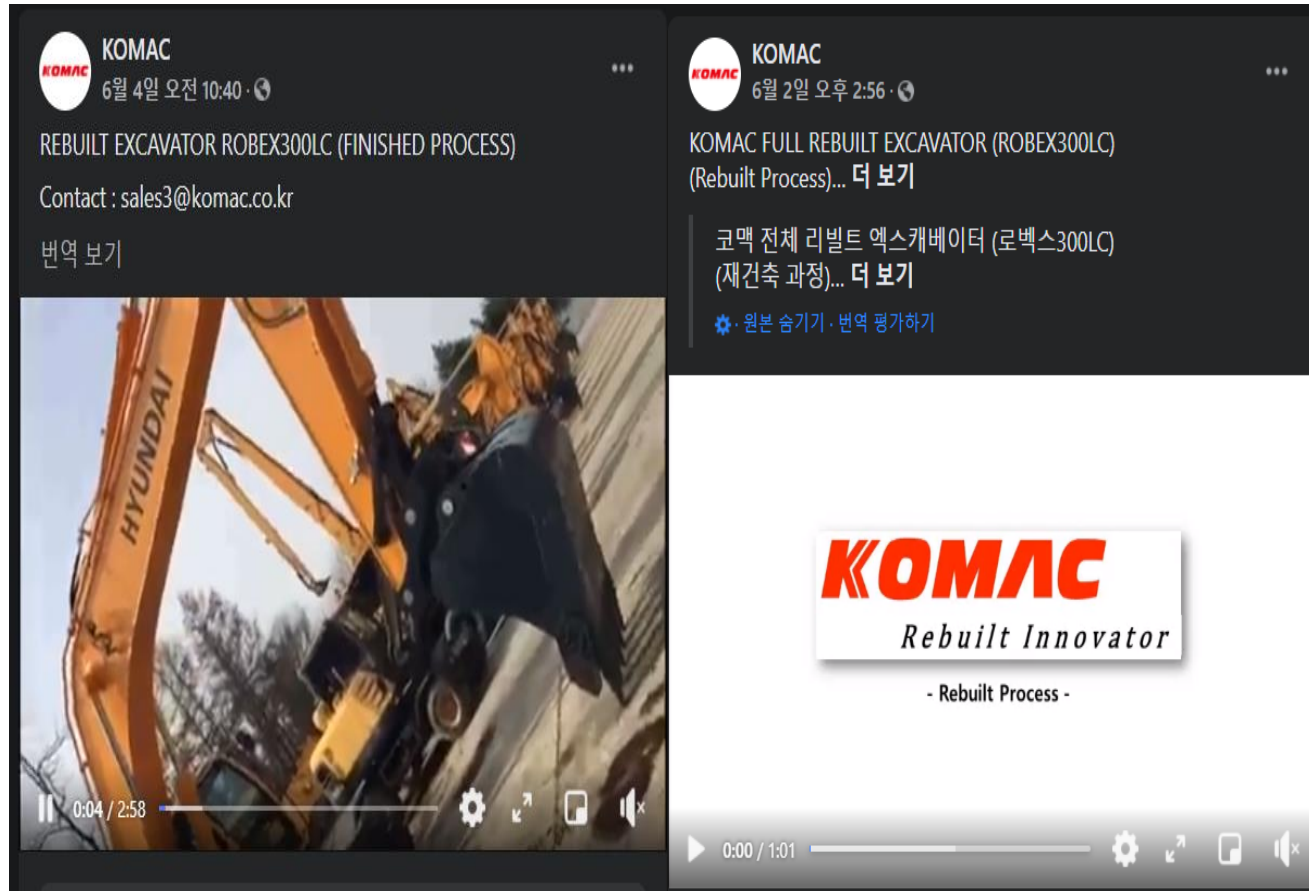
** Feature*

- (1) Arm Length : 3,050mm / Boom Length : 6,250mm /
Track Width : 600mm*
- (2) A/C*
- (3) Bucket Size : 1.3 m3 Standard Bucket*
- (4) Equipped Breaker Line*
- (5) Provide 1 set of filters as free of charge*

** Warranty : 6 Months or 1,000 Working Hours For Rebuilt Parts whichever comes first after delivery date*

5. More Info. AND CONTACT

More Info.



CONTACT



Korea Machine Co., Ltd

Address

#203 Yeong-Chang Building, 15 Yeouidaebang-ro 68-gil,
Yeongdeungpo-gu, Seoul, Republic of Korea 07343

Tel: +82 2 761 0880 Fax: +82 2 761 0049

Email: hq@komac.co.kr

Website: www.komac.co.kr

Please follow KOMAC facebook link to check more info.

<https://www.facebook.com/komacmachine/>