

● Hydraulic Drum Cutter **KDC series**

The drum cutters in the "KDC series" are particularly for working in the construction industry, cutting channels and tunnels, for renovation work or for road works, but also for smoothing and profiling rock and concrete walls. Application to fit 3-40tons Excavators & Backhoe Loaders.



Tunnelling work



Cutting the bottom of dam



Chipping the concrete surface



Cutting the coral stone



Cutting face of slope



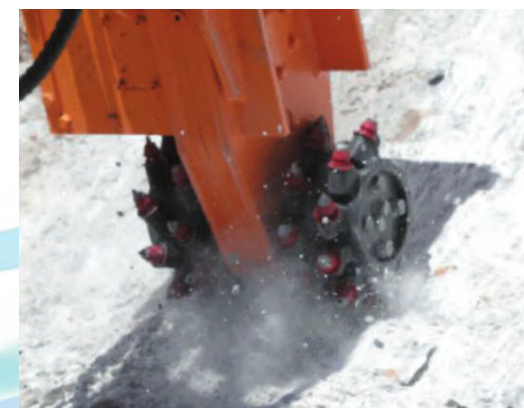
Digging the foundation for electric power pylon



Soft ground improvement work



Clearing of stumps



● Specification

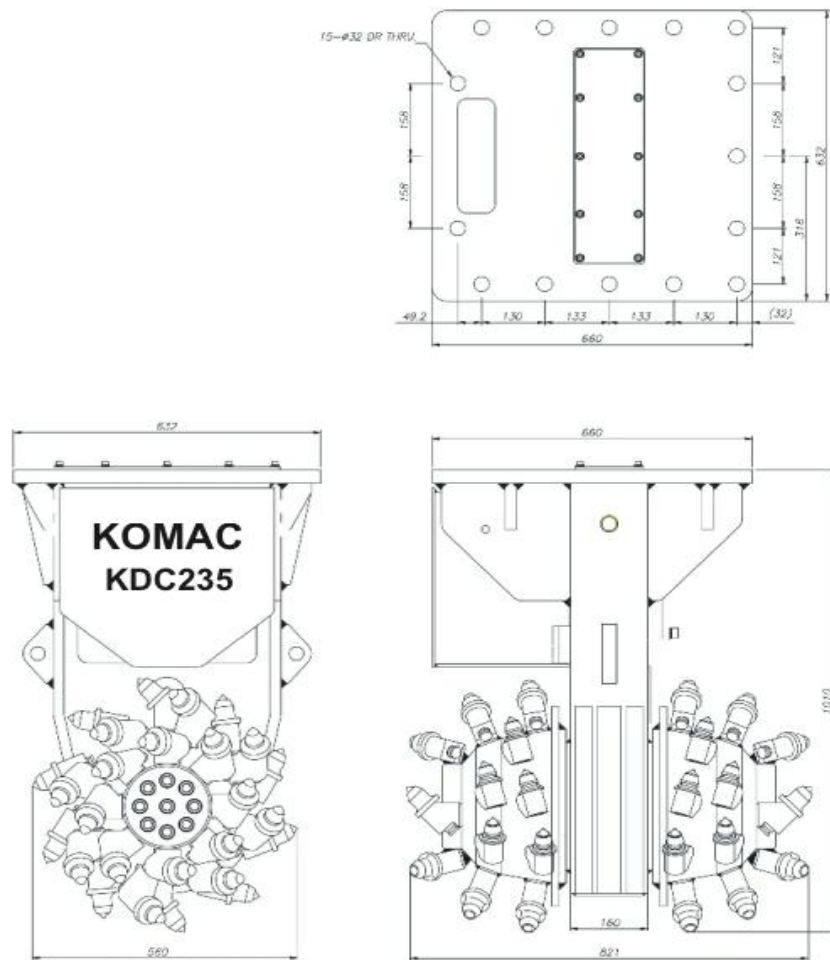
Descriptions		KDC 35	KDC 135	KDC 235	KDC 335	KDC 435
Operating weight	kg	372	845	1,340	1,860	2,620
Input power	kW	25	30	52	60	120
Max. Peak power	kW	34	40	62	70	140
Max. Operating pressure	bar	350	350	350	350	350
Oil flow required	l /min	30~50	60~90	80~140	140~210	260~400
Cutting speed	rpm	120~200	90~130	65~113	50~90	40~70
Cutting head torque	N.m	3,200	5,800	10,900	24,000	36,000
Cutter diameter	mm	360	460	590	620	730
No. of pick		2X30	2X32	2X36	2X30	2X32
Carrier weight	tons	3.0~8.0	8.0~15.0	15.0~22.0	18.0~30.0	30.0~45.0

➔ Above technical specifications are indicative and subject to change without notice

● Products overview

- ▶ High cutting force
- ▶ 5 models from 3 to 40 tons base carriers
- ▶ No required drain line
- ▶ Low maintenance
- ▶ Low vibration
- ▶ Low noise

Drum Cutter KDC Series



KOMAC
Technology With Passion

Korea Machine Co., Ltd.

#203 Yeong-Chang Building, 15 Yeouidaebang-ro 68-gil,
Yeongdeungpo-gu, Seoul, Republic of Korea 07343

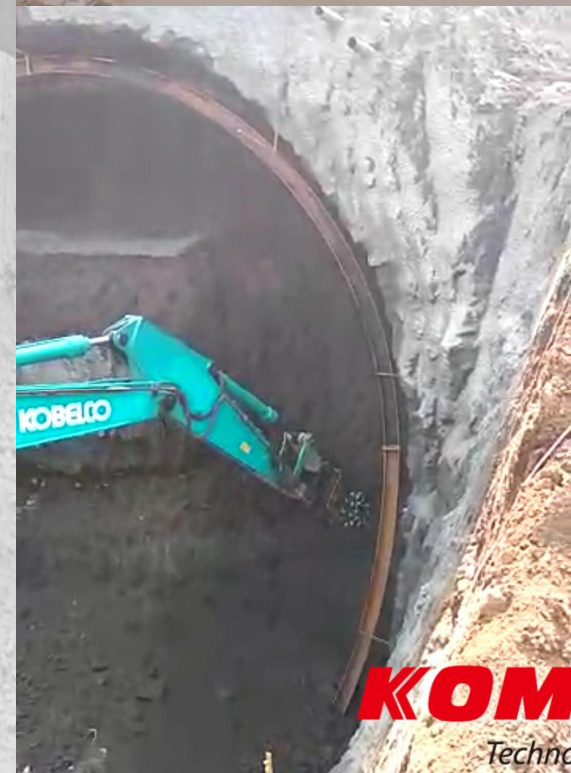
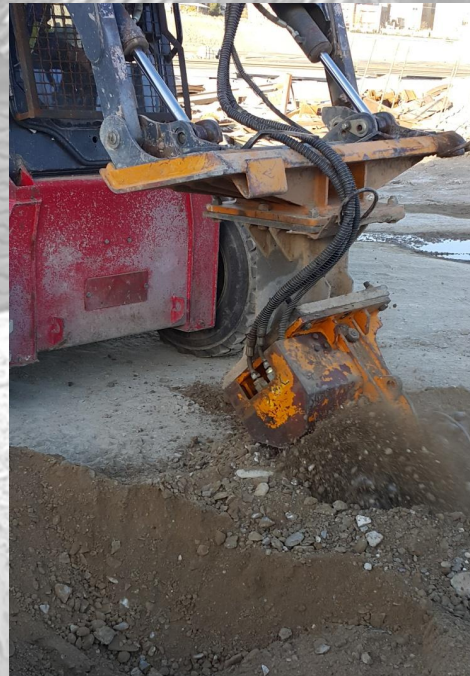
Tel : +82-2-761-0880 Fax: +82-2-761-0049

E-Mail : hq@komac.co.kr



www.komac.co.kr





КОМАС
Technology with Passion