



KOMAC

Technology with Passion

KOMAC is the next-generation hydraulic crane leading company, and we design and manufacture Korean truck mounted stick cranes by applying patent-pending technology based on accumulated technology in hydraulic specialized field for 25 years.

People and Technology established a company-affiliated research institute to develop next-generation hydraulic crane and special vehicle technology and develop new products. The core competency of R & D is quality competitiveness that can reinforce Brand Power by timely competitiveness of timely release of products, price competitiveness that can satisfy customers' specifications, and stable quality.

We contribute to corporate and social contributions by conducting research for the production of safe and perfect cranes, research for increasing sales, and securing competitiveness through cost reduction.



HRC354

Hydraulic Crane



Model Type(Type NO.)	HRC354
Lifted Load / Work Distance (kgf/m)	2,000 / 3.4
	1,300 / 5.4
	900 / 7.6
	600 / 9.8
Maximum Work Radius (m)	9.8
Maximum Work Height (m)	12.0
Proper Hydraulic Flow (cc/rev)	35
Proper Pressure (kgf/cm ²)	210
Boom Type	Hexagonal 4 stages
Reduction Gear Type	Winch Trolley Combined
Rotation Angle	360° Unlimited Rotation
Winch Type	Main Winch: Spur gear speed expression Assistant Winch: -
Outrigger Type	Front - Horizontal and Vertical Hydraulic Back - Horizontal and Vertical Hydraulic
Outrigger Extend Range (m)	Front - 2.13 ~ 4.33 Back - 2.3 ~ 3.3
Options	AML (Auto Moment Limiter), Wireless Remote Control
Applicable Vehicles	3.5 Ton over



HRC707

Hydraulic Crane



Model Type(Type NO.)	HRC707
Lifted Load / Work Distance (kgf/m)	3,000 / 4.8
	1,750 / 7.8
	1,020 / 10.7
	400 / 22.5
Maximum Work Radius (m)	22.5 (jib: 26.5)
Maximum Work Height (m)	25.3 (jib: 28.3)
Proper Hydraulic Flow (cc/rev)	54*54
Proper Pressure (kgf/cm ²)	200
Boom Type	Hexagonal 7 stages
Reduction Gear Type	Winch Trolley Combined
Rotation Angle	360° Unlimited Rotation
Winch Type	Main Winch: Spur gear speed expression Assistant inch: -
Outrigger Type	Front - Horizontal 2-stage telescopic vertical hydraulic Back - Horizontal and Vertical Hydraulic
Outrigger Extend Range (m)	Front - 2.23 ~ 6.06 Back - 2.26 ~ 4.46
Options	AML (Auto Moment Limiter), 1.5-ton Assistant Winch, 4M Assistant Boom
Applicable Vehicles	7.5 Ton over (4.5-ton Self Certification)



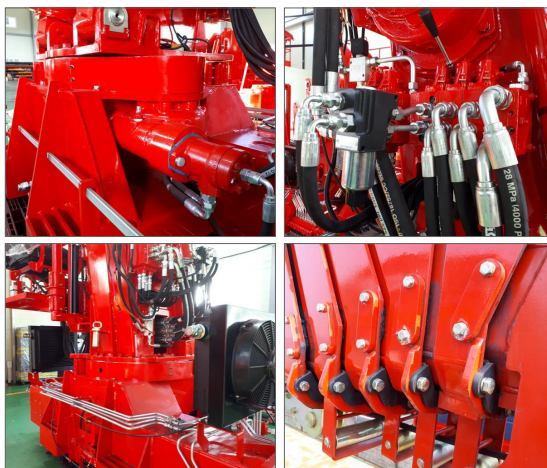
HRC1206

Hydraulic Crane



Model Type (Type NO.)	HRC1206
Lifted Load / Work Distance (kgf/m)	5,000 / 5.2
	3,100 / 8.6
	1,830 / 12.0
	600 / 22.3
Maximum Work Radius (m)	22.3 (jib : 26.3)
Maximum Work Height (m)	25.0 (jib : 29.0)
Proper Hydraulic Flow (cc/rev)	63 + 63
Proper Pressure (kgf/cm ²)	200 / 210
Boom Type	7Heptagon 7 stages
Reduction Gear Type	Winch Trolley Combined
Rotation Angle	360° Unlimited Rotation
Winch Type	Main Winch Spur Gear Reduction Type
	Assistant Winch Planetary gear reduction type (2 speed)
Outrigger Type	Front - Horizontal 2-stage telescopic vertical hydraulic
	Back - Horizontal and Vertical Hydraulic
Outrigger Extend Range (m)	Front - 2.45 ~ 6.22
	Back - 2.26 ~ 4.46

Options	AML (Auto Moment Limiter), Top Seat Lifting Device, Hydraulic Joy Stick, 3.5-ton 2-speed Assistant Winch, Angle-adjusting 4M Assistant Boom, Cabin, Air Conditioner, Heater
Applicable Vehicles	9.5Ton over (4.5-ton Self Certification)



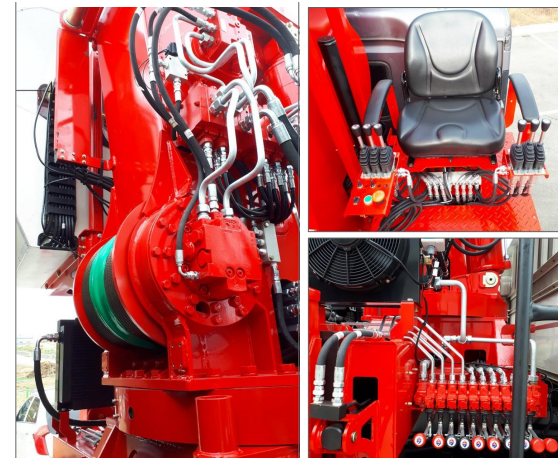
HRC1206S

Hydraulic Crane



Model Type (Type NO.)	HRC1206S
Lifted Load / Work Distance (kgf/m)	4,500 / 5.1
	2,250 / 8.6
	1,380 / 12.0
	600 / 22.3
Maximum Work Radius (m)	22.3 (jib : 26.3)
Maximum Work Height (m)	25.0 (jib : 29.0)
Proper Hydraulic Flow (cc/rev)	75 + 75
Proper Pressure (kgf/cm ²)	200 / 210
Boom Type	7Heptagon 6 stages
Reduction Gear Type	Winch Trolley Combined
Rotation Angle	360° Unlimited Rotation
Winch Type	Main Winch Planetary gear reduction type (2 speed)
	Assistant Winch Planetary gear reduction type (2 speed)
Outrigger Type	Front - Horizontal 2-stage telescopic vertical hydraulic
	Back - Horizontal and Vertical Hydraulic
Outrigger Extend Range (m)	Front - 2.45 ~ 6.22
	Back - 2.26 ~ 4.46

Options	AML (Auto Moment Limiter), Top Seat Lifting Device, Hydraulic Joy Stick, 3.5-ton 2-speed Assistant Winch, Angle-adjusting 4M Assistant Boom, Cabin, Air Conditioner, Heater
Applicable Vehicles	9.5Ton over (4.5-ton Self Certification)



HRC1207

Hydraulic Crane



Model Type (Type NO.)	HRC1207
Lifted Load / Work Distance (kgf/m)	5,300 / 4.7
	2,800 / 7.6
	2,100 / 10.6
	600 / 22.4
Maximum Work Radius (m)	22.3 (jib : 26.3)
Maximum Work Height (m)	25.0 (jib : 29.0)
Proper Hydraulic Flow (cc/rev)	75 + 75
Proper Pressure (kgf/cm ²)	200 / 210
Boom Type	7Heptagon 7 stages
Reduction Gear Type	Winch Trolley Combined
Rotation Angle	360° Unlimited Rotation
Winch Type	Main Winch Planetary gear reduction type (2speed)
	Assistant Winch Planetary gear reduction type (2speed)
Outrigger Type	Front - Horizontal 2-stage telescopic vertical hydraulic
	Back - Horizontal and Vertical Hydraulic
Outrigger Extend Range (m)	Front - 2.45 ~ 6.22
	Back - 2.26 ~ 4.46

Options	AML(Auto Moment Limiter), Top Seat Lifting Device, Hydraulic Joy Stick, 3.5-ton 2-speed Assistant Winch, Angle-adjusting 4M Assistant Boom, Cabin, Air Conditioner, Heater, Electric joystick
Applicable Vehicles	9.5Ton (4.5-ton Self Certification)



HRC1406

Hydraulic Crane



Model Type (Type NO.)	HRC1406
Lifted Load / Work Distance (kgf/m)	6,100 / 5.6
	3,000 / 9.5
	1,300 / 17.4
	800 / 25.3
Maximum Work Radius (m)	25.3 (jib : 29.3)
Maximum Work Height (m)	28.3 (jib : 32.3)
Proper Hydraulic Flow (cc/rev)	75 + 75
Proper Pressure (kgf/cm ²)	200 / 210
Boom Type	7Heptagon 6 stages
Reduction Gear Type	Winch Trolley Combined
Rotation Angle	360° Unlimited Rotation
Winch Type	Main Winch Planetary gear reduction type (2speed)
	Assistant Winch Planetary gear reduction type (2speed)
Outrigger Type	Front - Horizontal 2-stage telescopic vertical hydraulic
	Back - Horizontal and Vertical Hydraulic
Outrigger Extend Range (m)	Front - 2.45 ~ 6.22
	Back - 2.26 ~ 4.46

Options	AML(Auto Moment Limiter), Top Seat Lifting Device, Hydraulic Joy Stick, 3.5-ton 2-speed Assistant Winch, Angle-adjusting 4M Assistant Boom, Cabin, Air Conditioner, Heater
Applicable Vehicles	11 Ton over



HRC1906

Hydraulic Crane



Model Type (Type NO.)	HRC1906
Lifted Load / Work Distance (kgf/m)	7,930 / 6.4 3,950 / 10.6 2,800 / 14.6 1,100 / 27.0
Maximum Work Radius (m)	27.0 (Jib : 33.0)
Maximum Work Height (m)	30.0 (Jib : 36.0)
Proper Hydraulic Flow (cc/rev)	88 + 88
Proper Pressure (kgf/cm ²)	200 / 210
Boom Type	7Heptagon 6 stages
Reduction Gear Type	Planetary Gear Combination
Rotation Angle	360° Unlimited Rotation
Winch Type	Main Winch Planetary gear reduction type (2speed)
	Assistant Winch Planetary gear reduction type (2speed)
Outrigger Type	Front - Horizontal 2-stage telescopic vertical hydraulic
	Center - Horizontal and Vertical Hydraulic
	Back - Horizontal and Vertical Hydraulic
Outrigger Extend Range (m)	Front - 2.49 ~ 7.3
	Center - 2.26 ~ 4.46
	Back - 2.49 ~ 5.9

Options	AML(Auto Moment Limiter), Top Seat Lifting Device, Hydraulic Joy Stick, 3.5-ton 2-speed Assistant Winch, Angle-adjusting 4M Assistant Boom, Cabin, Air Conditioner, Heater
Applicable Vehicles	19 Ton over



HRC2106UN

Hydraulic Crane



Model Type (Type NO.)	HRC2106UN
Lifted Load / Work Distance (kgf/m)	9,900 / 6.9 5,080 / 11.5 3,140 / 16.1 1,500 / 30.0
Maximum Work Radius (m)	30.0 (jib : 36.2)
Maximum Work Height (m)	34.5 (jib : 40.5)
Proper Hydraulic Flow (cc/rev)	88 + 88 + 50
Proper Pressure (kgf/cm ²)	200 / 210
Boom Type	7Heptagon 6 stages
Reduction Gear Type	Planetary Gear Combination
Rotation Angle	360° Unlimited Rotation
Winch Type	Main Winch Planetary gear reduction type (2speed)
	Assistant Winch Planetary gear reduction type (2speed)
Outrigger Type	Front - Horizontal 2-stage telescopic vertical hydraulic
	Center - Horizontal and Vertical Hydraulic
	Back - Horizontal and Vertical Hydraulic
Outrigger Extend Range (m)	Front - 2.49 ~ 8.1
	Center - 2.26 ~ 4.46
	Back - 2.49 ~ 5.9

Options	AML(Auto Moment Limiter), Top Seat Lifting Device, Hydraulic Joy Stick, 3.5-ton 2-speed Assistant Winch, Extended Center Outrigger Angle-adjusting 6M Assistant Boom, Cabin, Air Conditioner, Heater
Applicable Vehicles	25 Ton over



HRC2106M

Hydraulic Crane



Model Type (Type NO.)	HRC2106M
Lifted Load / Work Distance (kgf/m)	8,500 / 7.6 4,300 / 12.8 2,500 / 18.0 1,000 / 33.6
Maximum Work Radius (m)	33.6 (Jib : 39.6)
Maximum Work Height (m)	37.5 (Jib : 43.5)
Proper Hydraulic Flow (cc/rev)	90 + 90
Proper Pressure (kgf/cm ²)	200 / 210
Boom Type	7Heptagon 6 stages
Reduction Gear Type	Planetary Gear Combination
Rotation Angle	360° Unlimited Rotation
Winch Type	Main Winch : Planetary gear reduction type (2speed) Assistant Winch : Planetary gear reduction type (2speed)
Outrigger Type	Front - Horizontal 2-stage telescopic vertical hydraulic Center - Horizontal and Vertical Hydraulic Back - Horizontal and Vertical Hydraulic
Outrigger Extend Range (m)	Front - 2.49 ~ 8.1 Center - 2.26 ~ 4.46 Back - 2.49 ~ 5.9

Options	AML (Auto Moment Limiter), Top Seat Lifting Device, Hydraulic Joy Stick, 3.5-ton 2-speed Assistant Winch, Extended Center Outrigger Angle-adjusting 6M Assistant Boom, Cabin, Air Conditioner, Heater
Applicable Vehicles	25 Ton



HRC2106MN

Hydraulic Crane



Model Type (Type NO.)	HRC2106MN
Lifted Load / Work Distance (kgf/m)	8,500 / 7.6 4,300 / 12.8 2,500 / 18.0 1,000 / 33.6
Maximum Work Radius (m)	33.6 (Jib : 39.6)
Maximum Work Height (m)	37.5 (Jib : 43.5)
Proper Hydraulic Flow (cc/rev)	90 + 90
Proper Pressure (kgf/cm ²)	200 / 210
Boom Type	7Heptagon 6 stages
Reduction Gear Type	Planetary Gear Combination
Rotation Angle	360° Unlimited Rotation
Winch Type	Main Winch : Planetary gear reduction type (2speed) Assistant Winch : Planetary gear reduction type (2speed)
Outrigger Type	Front - Horizontal 2-stage telescopic vertical hydraulic Center - Horizontal and Vertical Hydraulic Back - Horizontal and Vertical Hydraulic
Outrigger Extend Range (m)	Front - 2.49 ~ 8.1 Center - 2.26 ~ 4.46 Back - 2.49 ~ 5.9

Options	AML (Auto Moment Limiter), Top Seat Lifting Device, Hydraulic Joy Stick, 3.5-ton 2-speed Assistant Winch, Extended Center Outrigger Angle-adjusting 6M Assistant Boom, Cabin, Air Conditioner, Heater
Applicable Vehicles	25 Ton



HRC2106U

Hydraulic Crane



Model Type (Type NO.)	HRC2106U	
Crane Capacity	76.0 ton-m	
Lifted Load / Work Distance	9,900 / 7.0 kgf/m	
	5,080 / 11.6 kgf/m	
	3,140 / 16.1 kgf/m	
	1,500 / 30.0 kgf/m	
Maximum Work Radius	30.0 (jib: 36.2) m	
Maximum Work Height	34.5 (jib: 40.5) m	
Proper Hydraulic Flow	90 + 90 cc/rev	
Proper Pressure	200 / 210 kgf/cm ²	
Boom Type	17.5 m	
Boom elongation, shrinkage speed	23.0 / 65.0 sec	
Boom rising, descending speed	-10~80 / 50 sec	
Rotation Speed	1.5 RPM	
Rotation Angle	360° Unlimited Rotation	
For Wire Rope	4-Stage Extend	16.0 mm
	5-Stage Extend	14.0 mm
	Main Winch	16 x 120 mm
	Assistant Winch	16 x 80 mm
Hook Speed	60 / 100 m/min	

Winch Type	Planetary gear reduction type (2 speed)
Reduction Gear Type	Planetary Gear Combination
Outrigger Type	Front - Horizontal 2-stage telescopic vertical hydraulic
	Center - Horizontal and Vertical Hydraulic
	Back - Horizontal and Vertical Hydraulic
Outrigger Extend Range	Front - 2.49 ~ 8.1
	Center - 2.26 ~ 4.46
	Back - 2.49 ~ 5.9
Safety Device	Overload Prevention Device, Overwinding Prevention Device, Relief Valve, Counterbalance Valve, Outrigger Check Valve, Auto Winch Brake, Auto Rotation Brake, Rotation Prevention Locking Pin, Emergency Stop Device, Detaching Hook
Options	AML (Auto Moment Limiter), Top Seat Lifting Device, Hydraulic Joy Stick, 3.5-ton 2-speed Assistant Winch, Extended Center Outrigger Angle-adjusting 6M Assistant Boom, Cabin, Air Conditioner, Heater
Applicable Vehicles	25 Ton

HRTC300

Truck Crane

Model Type (Type NO.)		HRTC 300
Lifting Capacity	maximum	30 / 2.5 (ton/m)
	Length	0.4 / 33.0 (ton/m)
Boom	Type	5 stages / round type
	Length	9.5 ~ 35.0 m
	Elevating Angle	-2 ~ 80°
Main Winch	Capacity	4.0 ton
	Rope Diameter	16 mm
	Rope Length	190 m
	Maximum Hook Height	36.5 m
Assistant Winch	Capacity	4.0 ton
	Rope Diameter	16 mm
	Rope Length	110 m
	Maximum Hook Height	37.0 m
Rotation Device	Reduction Device	Planetary Gear Reducer
	Bearing	Ball Bearings (External Gears)
	Speed	1.5 rpm

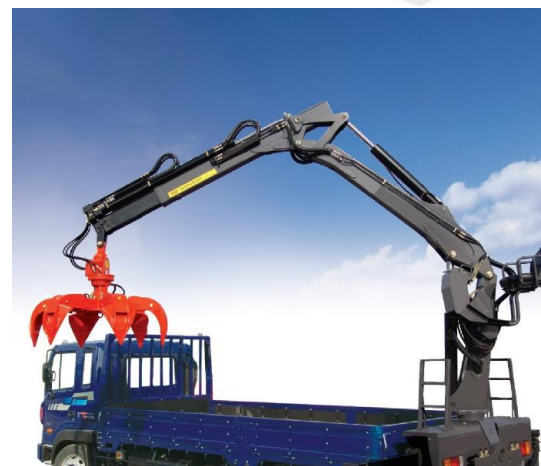
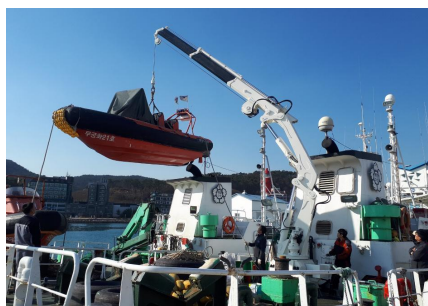
Outrigger	Type	H Type / 6 counts
	Working Mechanism	Hydraulic Type
	Installation Width	5.7 x 7.2 m
	Float Size	400 mm
Hydraulic System	Pump	Gear Pump
	Maximum Hydraulic Flow	150 + 150 + 95 lpm
	Proper Pressure	210 kgf / cm ²
	Control Valve	1 + 2 + 2
	Control Mechanism	Hydraulic Joy Stick
	Oil Cooler	Electric fan cooler
Chassis	Tank Capacity	400 ℓ
	Counter Weight	2.0 ton
	Type	6 x 4
	Maximum Output	400 / 2,200 ps / rpm
	Maximum Speed	90 km / hr
	Transmission	Forward 9th / Reverse 1st
	Climbing Capacity	15°
	Rotation Radius	8.9 m
	Overall Length	12,000 mm
	Overall Width	2,500 mm
Outer Size	Overall Height	3,850 mm
	Total Weight	29,950 kg



HRCN1702M

Knuckle Crane

Model Type (Type NO.)	HRCN1702M	
Lifting Capacity	17 ton-m	
Maximum Work Radius	7.7 m	
Maximum Height	9.3 m	
Proper Hydraulic Flow	52 lpm	
Proper Pressure	270 kg/cm ²	
Boom	Type	2-stage refraction / 2-stage expansion
	Shape	Inner Boom : Pentagon Telescopic boom : Hexagon
	Length	Min. 4.67 ~ Max. 8.17 m
	Elevating Angle	Inner Boom : -47.5 ~ 78° Outer Boom : 0 ~ -172°
Rotating System	Rotating Angle	360° Unlimited Rotation
	Rotation Speed	1.0 rpm
	Rotating Type	Planetary gear reduction type
Winch System	Winch Capacity	2.5 ton
	Wire Rope	14 x 45 Φ x m



HRC2000SP

Specialty Vehicles



Model Type (Type NO.)	HRC2000SP
Capacity	2.5 ton
Vehicle	Size
	Mighty EX 6.8 Chassis Cap
	Manufacturer
	Hyundai Motors
Tank	Capacity
	2,000
	Materials
	Stainless(SUS304)
	Agitator
	Forcing Screw Type
	Manufacturer
	Wondae Precision
	Size
	150A
	Nozzle Rod
	AL180
Spray	Hose
	16X100Ø x m
	Filter
	200 lpm
	Safety Device
	Bypass Valve (Hydraulic flow control and return)
Engine	Capacity
	21 HP
	Manufacturer
	Vanguard
	Battery
	12 V
	Engine Starting Method
	for Both of Auto and Manual
Clutch	Type
	Electronic System
	Voltage
	12 V

Option	FOAM MARKER
	Tree Disease and Pest Control



CM-10

Specialty Vehicles

Model Type (Type NO.)	CM-10
Maximum Load	150 kgf
Maximum Work Height	10.6M m (From the Ground)
Boom	Length
	2.1 m
	maximum
	9.2 m
Shape	Square
	No. of Stages
Working Type	Hydraulic Type (Simultaneous and Equal Extension)
	Proper Hydraulic Flow
	10 cc/rev
	Proper Pressure
	150 kgf / cm ²
	Sheave Diameter
	350 mm
Outrigger	Amount
	4
	Stroke
	450 mm
	Width
	2.8 x 1.6 m
Applicable Vehicles	2.5~3.5 ton
Weight	550 kgf

