



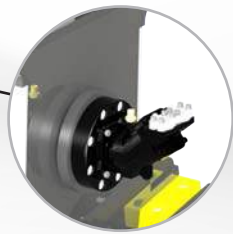
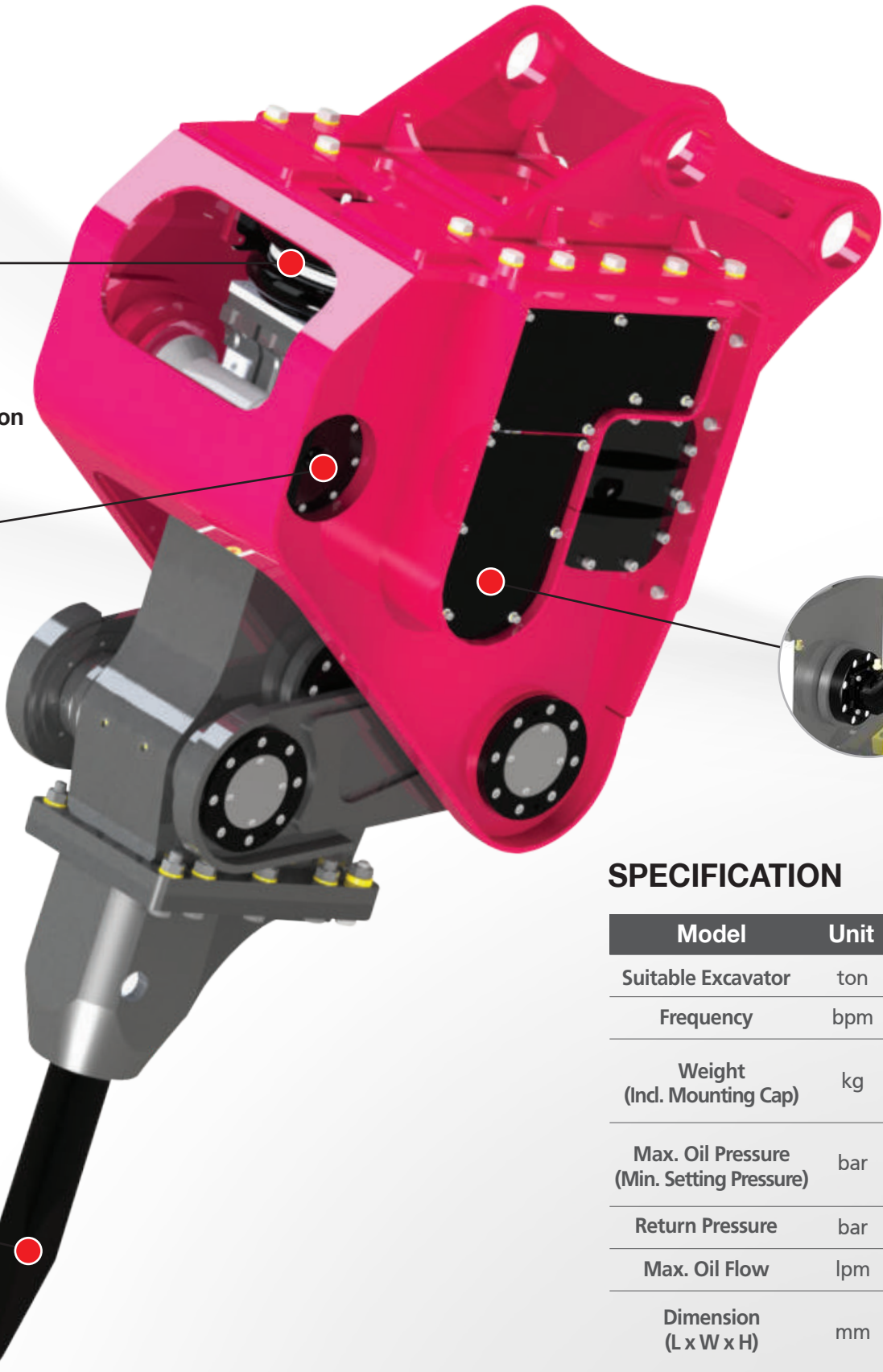
Double Air Cushion
Effectively minimize machine vibration



Bearing
Customized design completely resistible under high vibration force



Chisel
Registered front tip design which is able to keep it sharp for long time use



Motor
Piston motor with high efficiency

KOMAC Vibreaker Benefits

- 1

3 TO 5 TIMES HIGHER PRODUCTION
- 2

MINIMUM NOISE LEVELS
- 3

MINIMUM MAINTENANCE
- 4

LESS FUEL CONSUMPTION PER PRODUCED M3 / TON
- 5

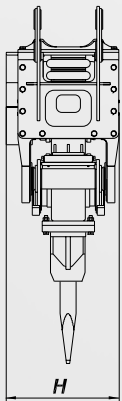
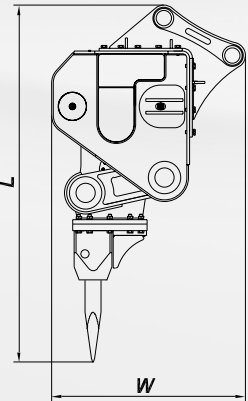
MARINE / UNDERWATER OPERATION

VIBREAER

SPECIFICATION

Model	Unit	KV20	KV30	KV40
Suitable Excavator	ton	18~26	25~35	34~45
Frequency	bpm	2800~3500	2500~3500	2000~2700
Weight (Incl. Mounting Cap)	kg	2900	3900	4900
Max. Oil Pressure (Min. Setting Pressure)	bar	350 (300)	350 (300)	350 (300)
Return Pressure	bar	6	6	6
Max. Oil Flow	lpm	200	240	260
Dimension (L x W x H)	mm	2720 x 1370 x 880	3000 x 1555 x 945	3365 x 1682 x 1033
Tool Diameter	mm	130	140	150

Above specifications are subject to change without prior notice for performance enhancement.





VIBRO HAMMER

Motor
Piston motor with high efficiency

Vibration-Proof Rubber
Improve durability with vibro-isolating rubber

Jaw
Tight clamping and easy moving

KOMAC VIBRO Hammer Benefits

- 1

WIDE RANGE OF CONTRUCTION AREAS
- 2

ROTATING MOUNTING BRACKET
- 3

QUICK HYDRAULIC INSTALLATION
- 4

INTUITIVE DESIGN
- 5

OPTIONAL EXTENSION BOOM

SPECIFICATION

Model	Unit	KPD250	KPD300	KPD400
Suitable Excavator	ton	18~26	25~35	34~45
Frequency	bpm	2800~3500	2500~3500	2000~2700
Eccentric Moment	nm/in lbs	66/584	80/708	100/885
Centrifugal Force	kn	450	500	550
Amplitude	mm	12	14	16
Max. Oil Pressure (Min. Setting Pressure)	bar	350 (300)	350 (300)	350 (300)
Max. Oi Flow	lpm	200	240	260
Slewing	degree	360	360	360
Weight	kg	1550	1850	2100
Ext. Boom Weight (Incl. Mounting Cap)	kg	580	700	870
Clamp Width(A)	mm	65	65	65
Dimension (L x W x H)	mm	1840 x 1040 x 750	1900 x 1100 x 790	1920 x 1190 x 840

Above specifications are subject to change without prior notice for performance enhancement.

